

# TC2000®

Upgrade the Way You Trade  
with the *NEW* version 12.4

Here's how...

To get the TC2000 12.4 upgrade, visit [www.TC2000.com](http://www.TC2000.com).

Run the software within the browser or install to your PC or Mac.

Sign-in with your TC2000 account credentials, and let the hunt for your next trade begin!

What's new?

Faster Charts • Floating Windows • Add Plot Button • New Plot Categories • Multiple Price Graphs on Charts • Upgraded Pointer • Create Indicators of Indicators • Plottable Historical Fundamentals • New Sector Classifications • Streaming Sector Charts • Streaming T2 Market Breadth Charts • Related Items WatchList Tool • Improved Alerts Management • New Worden Commentary Interface

Read on to find out more...

## Faster everything.

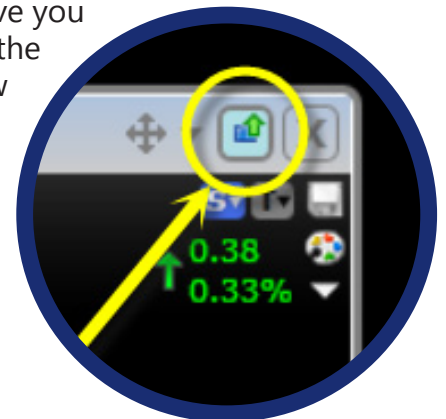
You'll probably notice the speed increase right away... try hitting the *Spacebar* to move through a watchlist quickly and enjoy the instant charts!

## Floating windows!

Whether you're working with one monitor or four, **floating windows** will give you a ton of new options for laying out your research. Use the *Float* button in the upper-right corner of any tool window to create a fully-functioning window that operates outside the primary TC2000 application. Floating windows can be minimized, maximized, or left floating on any monitor.

Even customized collections of tools can be floated in new windows. Right-click any existing *Layout tab* and choose *Float* to spin one off.

Window configurations are automatically remembered, so your favorite setups will follow you to any computer in any location.



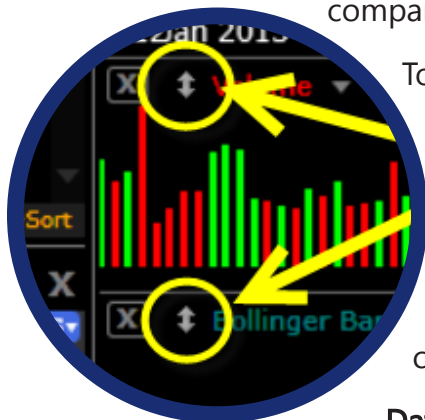
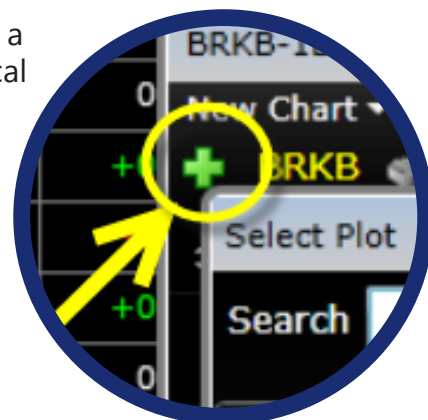
## Smarter charts.

Many of the enhancements you'll find in TC2000 v12.4 involve **charting workflow**. From the way indicators are categorized to a more informative pointer, you'll notice many small improvements that will make a big difference.

Click the new **Add Plot button** or hit the **'/'** key on your keyboard to browse a library of all available plottable chart data. You'll find categories for Technical Indicators, Fundamental data, Sector and Industry Indexes, Market Indexes, Breadth Indicators, Exchange Traded Funds, Forex, and additional Symbols.

Browse the library manually or type to search for a plot by keyword. Choose any item from any category to add its plot to a chart.

That means you can now **add as many Price graphs to a chart as you'd like** - for as many symbols as you'd like - all of which share the same zoom settings and timeframe. They can even be overlaid for easy performance comparisons.

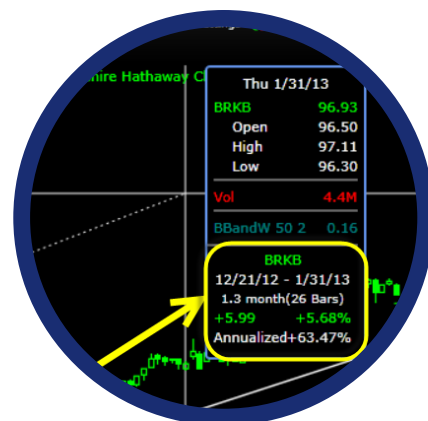


To overlay plots, click the Move button next to any indicator name on a chart. You'll be prompted with overlay instructions and can choose whether to scale the overlaid plots together or independently.

You'll also find an **upgraded pointer**. Click the background of a chart to activate the pointer. Select a date to view detailed chart data for all chart indicators at that specific point in time.

**Data box details** have been expanded to include descriptive figures for chart spans. Drag the pointer between any two points on the chart to measure number of bars, performance, and annualized returns.

For charts with different timeframes, notice that the pointer now works across charts. Place the pointer on a longer timeframe bar, and watch as the pointer highlights the relevant chart history on all shorter timeframe charts.



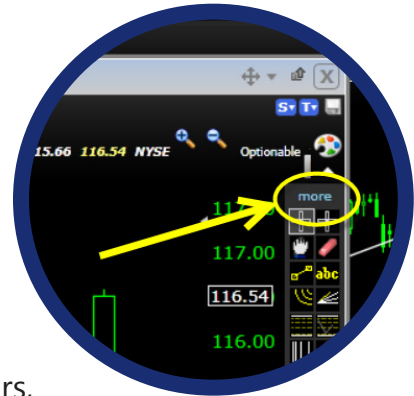
Drawing Tools have been improved in several key ways. You'll find Drawing Tools on every chart. Click the **Paint Palette** in the upper-right corner of any chart to open the Drawing Toolbar. **Fibonacci Projections have been added to the library of available drawings**. When drawing Trendlines, hold the Shift key and drag to draw perfectly horizontal lines.

Also, drawings can now be assigned to specific **Drawing Boards**, which act as layers that keep drawings of different types separate. Any of the eight boards can be toggled on or off at any time for any chart. Ctrl-Click any board number within the Drawing Toolbar to make its drawings visible.



Use the **Scratch board** for a particular chart template to jot thoughts and drawings that might not need to be available for use on any other templates.

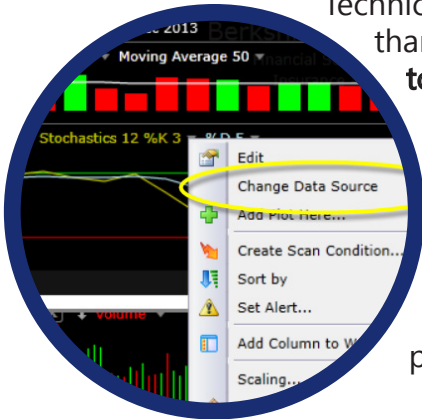
Click the *More* button within the Drawing Toolbar to expand drawing info. Click the details of any board to open a watchlist of the board's symbols or to delete any of its drawings.



Technical indicators can now be used to study more than Price and/or Volume. **Apply technical indicators to anything** - including historical fundamentals, sectors, industries, T2 market indicators, or any other technical indicator.

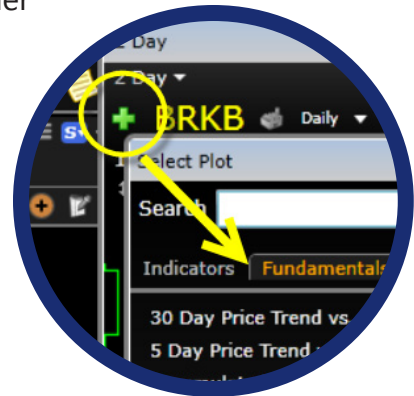
Any indicator you create can be instantly applied to an alert, scan, or sort.

Click the name of any technical indicator on a chart, and select *Change Data Source* to calculate the indicator using any other plot's data as an input.



### Historical fundamental data is now plottable.

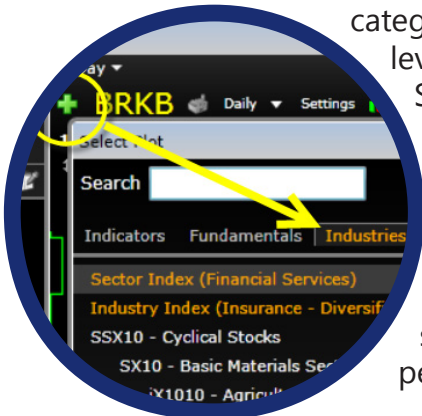
Fundamental figures such as sales, dividends, and key ratios include 25 years of historical data. Within the *Add Plot* dialog, select the *Fundamentals* tab to choose any items you want plotted on a chart.



**New Sector classifications and intraday streaming updates.** Sector information is now reflective of current Morningstar categorizations. You'll find Super Sector, Sector, and Industry level breakdowns. Click the *WatchList* button on the Main Toolbar and choose Super Sector Indexes, Sector Indexes, or Industry Indexes to monitor market performance for broad, intermediate, or closely related families of stocks.

All Sector information includes streaming real-time calculations for

Industry composite Price and Volume, making it possible to perform real-time Industry-based sorts and scans throughout the trading day. Simply sort any of the Sector watchlists by %Change or Volume to find the best-performing or most active groups.



Easily compare the performance of any symbol to an index of its Sector or Industry, or open a watchlist of items that share a symbol's Sector or Industry category. Click the *Industry Info* button on any chart to do either.

T2 market breadth indicators have been improved as well. For a list of T2 indicators, use the *Add Plot* button on any chart and visit the T2 tab. You'll find a long list of indicators whose jobs are to characterize big-picture broad-market performance. All of these **breadth indicators now stream throughout the day.**



## Check Related Items

Open a **Related Items WatchList** to learn more about any symbol. You'll see any Indexes and Exchange Traded Funds the current symbol is a part of. You'll also have immediate access to lists of all the stocks that share the same Sector or Industry category. Plus, if the current symbol is an Index or an ETF, you'll find a list of its components or holdings.

The Related Items window paints an instant picture of a symbol's position within the market and relationship to other symbols.

There are a couple of ways to open a Related Items watchlist. Click the *WatchLists* button on the Main Toolbar, and choose any of the *blue watchlists* within the *QuickLists* section. Blue watchlists include *Member of, Industry, Sector, and Components*. Alternatively, click the *Industry Info* button on any chart, and choose *Open Sector/Industry WatchList*.



## Improved Alert Management

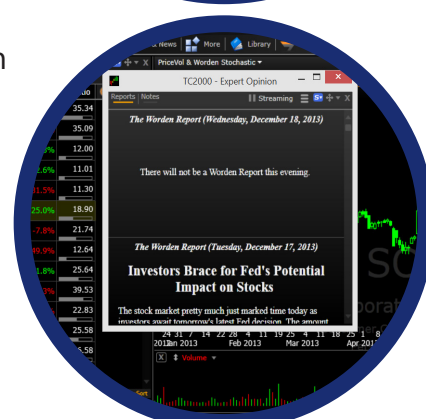
As alerts fire, an in-application pop-up window appears to ensure you never miss an alert. Notifications are now logged in the *Messages* dialog, accessible in the upper-right corner of the primary TC2000 application window.



## Worden Commentary

Peter Worden's notes & reports put trading ideas and chart setups at your fingertips throughout the trading day. Select the *Notes & News* button on the Main Toolbar, and choose *Peter Worden Notes & Reports* from the menu.

You'll have access to an organized list of all of Peter's most recent notes, including his charts that you can open and use. Plus, you'll find the Worden Report, an invaluable resource for breaking down the events of the day.



*Trouble getting started?*

(800) 776 - 4940

(919) 408 - 0542

M - F 9AM - 5PM, Sat 10AM - 2PM ET