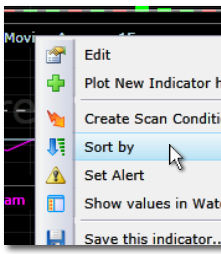
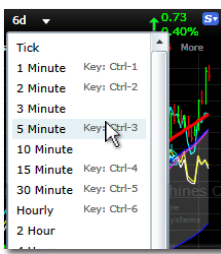
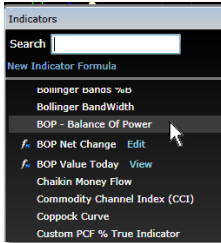


TC2000®

Training Class Workbook



% Change	Capitalization	Net Change
+0.05%	\$364.6B	+0.18
+0.44%	\$224.3B	+0.80
+2.68%	\$90.5B	+0.42
-0.84%	\$78.0B	-0.31
-0.26%	\$57.1B	-0.07
+1.28%	\$32.2B	+0.21
+0.72%	\$19.0B	+0.34
-1.95%	\$16.7B	-0.48



Copyright

© 2013 Worden Brothers, Inc.

All rights reserved. Printed in the United States of America. Except as permitted under the Copyright Act of 1976, no part of this publication may be reproduced or distributed in any form or by any means, or stored in a database or retrieval system, without the prior written permission of the publisher.

Information has been obtained by Worden Brothers, Inc. from sources believed to be reliable. However, because of the possibility of human or mechanical error by our sources, Worden Brothers, Inc. does not guarantee the accuracy, adequacy or completeness of any information contained herein and is not responsible for any errors or omissions or the results obtained from the use of such information.

www.Worden.com
Worden Brothers, Inc.
PO Box 1139
Wilmington, NC 28402
Customer Service: 1-800-776-4940
Technical Support: 1-919-408-0542
Fax: 1-919-408-0545

Updated December 2013

2013 Training Class Notes TC2000® v.12.4

WELCOME!	1
Jump Start! What You Need to Know to Start Using TC2000 Today	2
TC Classic Layouts	
Navigation	
WatchLists	
What's New in TC2000 12.4?	8
Windows	
Charts	
Data	
EasyScan® : The Fastest Way to Find Stocks with TC2000	12
Building Conditions	
Sorting	
EasyScan	
Layouts: Create & Customize Your Own Trading Environment	14
Customizing Layouts You Use	
Creating Layouts from Starter Templates	
Platinum Features	
Checking the Pulse of the Market	21
Broad Market Analysis	
Stand-out Sectors	
Resources for Further Study	26
Complete List of Hotkeys	27

WELCOME!

Thanks for joining us for the all-new TC2000 Training Class for 2013 introducing the brand new TC2000 version 12.4! Today you'll learn:

- The basics of reading a stock chart
- The fastest, simplest ways to navigate TC2000
- The most important features to learn first
- Creating your own Layouts from starter templates
- Keeping your thoughts and favorite stocks organized
- Building EasyScans that you'll use every day
- Mastering the TC Classic+ Layout fresh out of the box
- The best places to find pre-built scans, WatchLists & charts
- Hunting down investment opportunities in the research feeds
- Customizing TC2000 to fit your particular trading style

We hope these notes will help you retain and remember the material we cover throughout the day. We have broken the material in five sections to be covered in today's four class sessions.

We have made an attempt to be comprehensive, so there may be material in the notes we do not get to cover in the class (or vice versa). We've also included resource information at the end of this document to help you follow up after you leave today's class.

We hope you enjoy the class.

Julia Ormond, CMT & Michael Thompson
TC2000 National Trainers

Here are some additional things to remember:

1. Along with TC2000 v 12.4, your current TC2000 version 7 will continue to work as a separate platform. There is no additional cost to use both.
2. You have access to mobile applications as part of your TC2000 subscription. You can access the mobile version in your App store by searching for TC2000 or going to www.TC2000.com in your mobile browser. Please note that mobile versions only work with TC2000 v12+. (Available for iPad, iPhone, Android phones and tablets and the Kindle Fire.)
3. You can import your settings (PCF's, WatchLists, Chart Templates, EasyScans, etc.) from TC2000 version 7 either during the installation process of TC2000 or by clicking on the File menu and choosing the Import Settings from TC2000 version 7.
4. All future upgrades to TC2000 will automatically be present when you log in. New versions will be accompanied by a message asking if you would like to see the notes concerning what is new in the program. Click "Yes" to read the update notes.

Jump Start! What You Need to Know to Start Using TC2000 Today

Whether you are brand new to TC2000 or have been using it for years, this how-to, hands-on session gives you the simple steps and key shortcuts you need to start using your TC2000 out of the box today.

You'll learn how to:

- Use pre-built Layouts, charts, WatchLists, conditions, Scans...all ready for use out of the box
- Create personal WatchLists and add charts to them on the fly
- Easily write personal notes as an integrated trading journal
- Utilize simple hot keys to instantly navigate symbols, time-frames, price plots and libraries
- See and use the latest news, notes and research in a simple one-window format
- Rank any WatchList by any condition with one click through sorting
- Notate your charts with drawing tools

TC2000 features you will use: Pre-built Layouts; pre-built libraries; WatchLists; Basic Indicators; navigation tools; basic menus; News & Notes; drawing tools; hot keys

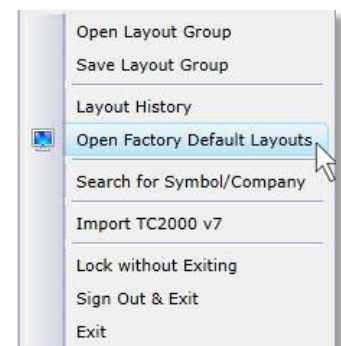
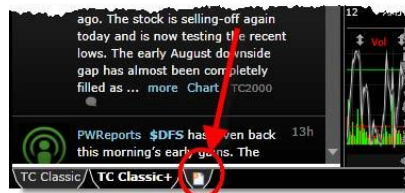
The TC Classic Layouts

TC Classic and **TC Classic+** Layouts make up the default Layout Group for TC2000.

To open this default Layout Group, click the **File** menu and select **Open Factory Default Layout Group**

To access each Layout Tab, click the desired Layout tab at the bottom of the screen.

To open either of the classic Layouts in any Layout Group, click the **New Layout Tab** button and select the desired Layout from the menu.



TC Classic

The **TC Classic**, the standard for TC2000 for many years, contains three windows:

WatchList Window:

- >Default: Nasdaq 100
- >Click *WatchList picker* to change WatchLists
- >Click *column header* to sort WatchList

Notes & News Window:

- >Aggregates news stories, Twitter and TC2000 user posts and third party research.
- >Tabbed Windows: My Notes; My Friends Notes.
- >Edit button: change Feeds & properties

Chart Window:

- >Price history of current symbol with selected indicators.

TC Classic+



The **TC Classic+** Layout has everything TC Classic contains, plus several other useful tools.

Click one of the Indexes in the top-left Market Summary WatchList; view the stocks that make up that index in the WatchList below.

Click on any symbol to view the list of stocks that share Industry or Sub-industry in the upper-right WatchLists

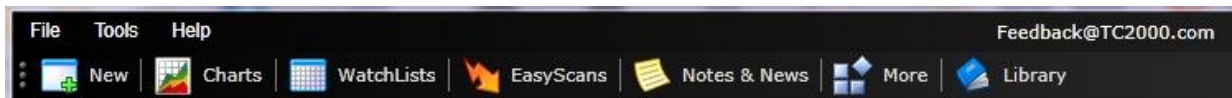
The Flagged and My Favorites WatchLists can be populated by using hotkeys: **<Shift-F>** to flag/unflag, and **<Shift-V>** to add to Favorites list

For Platinum users: Tabbed windows are All-TCNet Chat; the Live Help Chat, and the Corporate Calendar.



Main Toolbar Menu

The Main Toolbar in TC2000 located along the top of the application includes buttons to access most major functions of TC2000.



If you prefer the vertically oriented toolbar, click the icon at the left of the menu toolbar.



Navigation

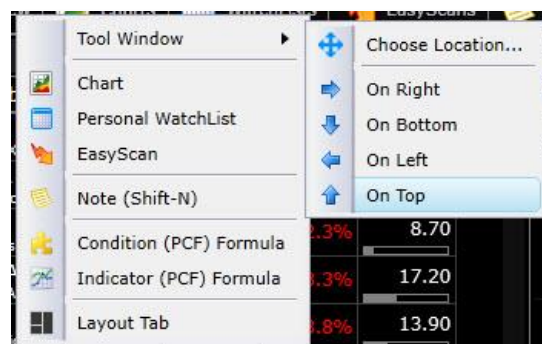
In this section, learn the key functions which allow you to navigate the major tools you need to get started using TC2000 quickly.

Convenient hotkeys, shortcuts and techniques help you move through the various features of the program effortlessly (see final page of this workbook for a complete list).

New Button

The New button on the main toolbar is a quick, convenient way to:

- Add a new tool window to your Layout Tab (blank window, chart, WatchList or EasyScan)
- Write a new note
- Write a new Personal Criteria Formula (PCF) for an indicator or condition
- Start a new Layout Tab

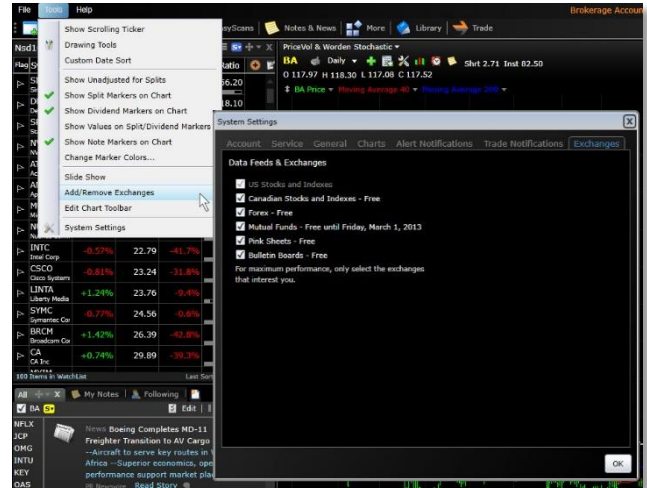


Symbols

TC2000 contains symbols for the following data feeds with online streaming data (up to 15 minutes Delayed+ for gold; US real-time data for platinum customers):

US common & preferred stocks
ETFs
Forex (24 major pairs)
Mutual Funds
Canadian stocks (TSX & Venture TSX)
Indexes (US & Foreign)
Nasdaq Bulletin Boards & Pink Sheets

To add or remove any exchange, click
Tools > Add/Remove Exchanges.



Jump

Simply start typing any letter from A-Z and the search dialog will automatically pop up. You may type any part of a ticker symbol or company name. Select by clicking on the company name or hit Enter on your keyboard.



Spacebar

While in a WatchList, press the **<Spacebar>** to move down through the next items. Press **<Ctrl-Spacebar>** to move up through the previous items. You may also use the up and down arrow keys to perform the same operation.

Backspace

Press the **<Backspace>** key to go back to the last symbol you were viewing. This is handy for jumping to a different stock in another WatchList or in a news story and then immediately returning to what you were doing. You may hit the **<Backspace>** key as many times as you would like to review all your recent stocks. (Please note that this is a new behavior for the **<Backspace>** key. In previous versions of TC2000, it would move up a WatchList. Now you use **<Ctrl-Spacebar>** to move up through a WatchList.)

Linked Symbols

Symbols that begin as \$ in news and notes are clickable links that will take you directly to a stock.



Time Frames

You can view your price data (up to 25 years of market history) in any of the following time frames:

Tick
1, 2, 3, 5, 10, 15, 30 minute chart
1, 2, and 4 hour charts
1 - 9 Day charts
Monthly, Quarterly and Yearly

Picker

Click the timeframe picker at the top of your chart to view a drop down with time frame choices. Click on the desired time frame to change the price chart. Notice that hotkeys are available to change these time frames on the fly from the keyboard.



Zoom & Pan

The easiest way to zoom in/out on your chart is with the scroll wheel on your mouse. You can also grab the end of the zoom & pan bar at the bottom of the chart to zoom.



Grab the middle of the zoom & pan bar to move back in time.

You can use the bracket keys on your keyboard to move the chart forward or backward one bar at a time.



Plots

Select from TC2000's library of over 80 technical indicators, 70 historical fundamental, Industry, Index, Market Indicators, PCFs or Stock symbols to add, edit and overlay plots on your chart.

Add/Edit

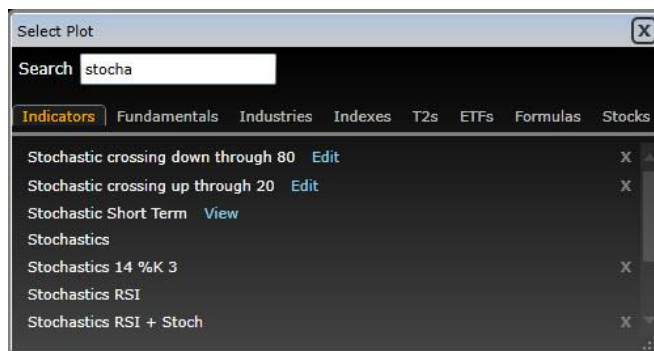
There are several ways to add and edit plots to your charts.

Picker

Click the **Add Plot** button at the top of your chart to select studies from the indicator library.

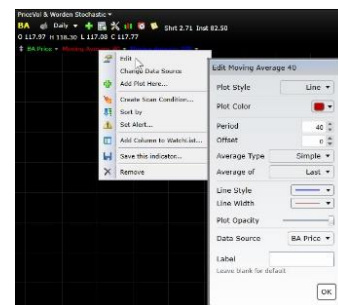
/ Shortcut

Press the forward slash / key on your keyboard, and start typing to add a plot in a new pane on the fly.



Edit

Click on the plot name in the legend of any pane to access the Edit window. This window allows you to adjust any parameters of the plot that can be altered.



Moving/Overlay

Click the double arrow icon next to any indicator name to change the positions or overlay the plots displayed on a chart.



Options:

Pin--temporarily move the plot from view without deleting it from the chart. You can pin either individual plots or panes that contain multiple indicators.

Insert--assign a new location for the indicator

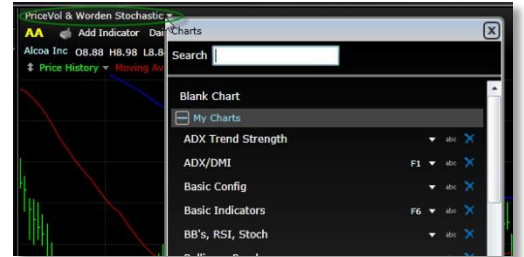
Overlay--place the plot in the same pane as another indicator.

This can be done scaling the plots individually or separately



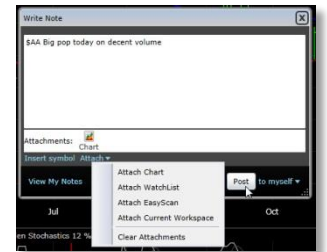
Changing Chart Templates

Click the chart template name at the top of your chart to open your Chart Template library. Select any template to make it your active chart layout.



Write a Personal Note

Press **<Shift-N>** to write a note. The chart you are currently viewing will automatically be attached to your note. You may also attach other Charts, WatchLists, EasyScans and Layouts to your note. The note can be posted to yourself (private), to your friends or to everybody (all TC2000 users). Click **View My Notes** to open all of your notes.



Trendline/Shortcut

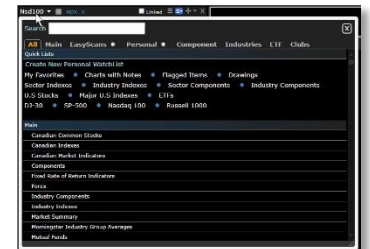
<Shift-D> is the shortcut to open the trendline drawing tool. Simply click where you want to start and drag to where you want to end. Click on the trendline itself to **Edit** or create a parallel trendline.



WatchLists

TC2000 contains hundreds of WatchLists preconfigured and maintained by Worden Brothers. Click the WatchList menu button to see the WatchLists categorized for you.

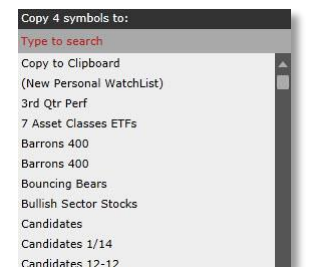
You can also build as many personal WatchLists as you would like. Below are a number of ways you can quickly and easily build your WatchLists.



Moving Symbols between WatchLists

Press **<Ctrl-C>** to copy the stock you are viewing into a personal WatchList. This also works for multi-selected items in a WatchList. You will be prompted to select the personal WatchList into which you want to copy the symbol(s). Copy to the clipboard if you wish to paste later to another list or another program. Notice you may also create a new personal WatchList on the fly.

You can multi-select stocks in a WatchList by clicking on an item to select it. While holding the **<Shift>** key down, click on another item. All the items in between will highlight as a group. Another way to multi select individual items is to hold the **<Ctrl>** key down while clicking on items. Once selected, all operations can be applied to the selected group including flagging **<Shift-F>**, copying **<Ctrl-C>**, adding to favorites **<Shift-V>** and writing notes **<Shift-N>**.



Adding Symbols to Favorites

Press **<Shift-V>** to copy the stock you are viewing into your My Favorites WatchList. This also works for multi-selected items from WatchLists.

Flagging Symbols

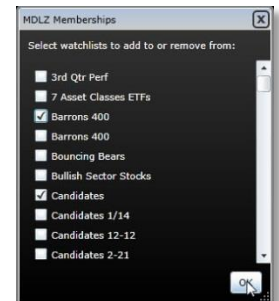
Press **<Shift-F>** to flag or unflag the stock you are viewing. You may also click the flag icon in a WatchList. You can multi-select items in a WatchList using **<Shift-Click>**. Then **<Shift-F>** to toggle the flags on for the entire group. Click the WatchLists button on the main toolbar and select the Flagged Items WatchList. As you flag and unflag stocks, you'll see them get added and removed from this list.

Flag	Symbol	% Change	Price	Vol Buzz	P/E Ratio
▶	ATVI Activision B	+3.01%	10.94	-26.4%	13.70
▶	NVDA NVIDIA Cor	+3.75%	12.72	+10.1%	15.10
▶	ACGL Arch Capita	+0.82%	44.38	+67.6%	8.70
▶	ACC American C	+1.13%	46.65	-31.2%	72.80
▶	ADP Automatic I	+2.56%	58.39	+51.9%	19.80
▶	ACN Accenture I	+3.85%	69.06	+32.8%	16.70

Viewing or Changing WatchList Memberships

Press **<Ctrl-M>** to see which personal WatchLists the current symbol is included in. Click the checkboxes to instantly add and remove the symbol from any of your personal WatchLists.

NOTE: All flagging, copying and personal WatchList maintenance can be accessed by right clicking on an item or group of items in a WatchList.



Columns

WatchLists contain column sets. Any column can be used to rank any WatchList by the value of the criteria.

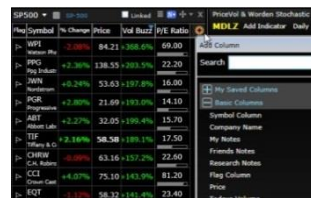
NOTE: Columns can also be created with indicators on your chart (see Building Conditions section of notes for instructions).

Sort

Columns are sortable by simply clicking on the sort column header once for descending or twice for ascending order. The small blue arrow indicates the column being used and the direction of the sort.

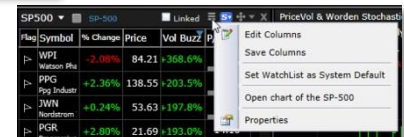
Add/Edit

You can add, edit and save individual columns and column sets.

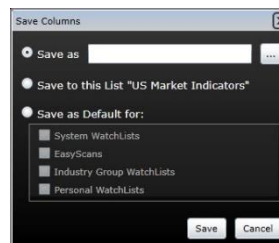


Flag	Symbol	% Change	Price	Vol Buzz	P/E Ratio
▶	WPI Watson Pha	-2.08%	84.21	+368.3%	69.00
▶	PPG Ppg Industr	+2.36%	138.55	+203.5%	22.20
▶	JWN Nordstrom	+0.24%	53.63	+197.8%	16.00
▶	PGR Progressive	+2.80%	21.69	+193.0%	14.10
▶	ABT Abbott Labi	+2.27%	32.05	+190.4%	15.70
▶	TIF Tiffany & C	+3.26%	59.21	+188.9%	17.50
▶	CHRW C.H. Robins	-0.09%	63.16	+157.2%	22.60
▶	CCI Crown Cast	+4.07%	75.10	+143.9%	81.20
▶	EQT Eqt Corpor	-1.12%	58.32	+141.4%	23.40
▶	FMC 165 of 300 Items in WatchList	-1.03%	26.40	+137.0%	26.40

Click the Properties icon in the WatchList to find the Column save functions.



You can also set default columns for different WatchLists.



What's New in TC2000 12.4?

Because you are attending our free training class today, you are among the first to see the new features of the most recent release of TC2000 (even if that release is still in Beta). Here are the newest features and how you can access them.

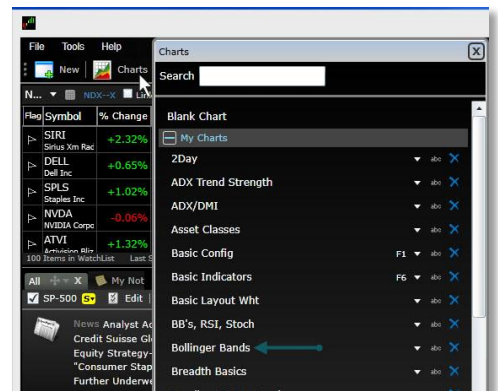
WINDOWS

New Floating Windows

You can now open and float any tool window independent of your TC2000 main layout tab. This allows you to drag windows out of your main Layout Tab and dock other tool windows into the new floating windows. You can float more than one tool window simultaneously.

Example: Click on the Chart Tool Menu. Choose the chart you want to open.

The chart appears in an Undocked window which floats only in your main Layout Tab.



Click the Float Window icon in the Undocked window. This changes the Undocked window into a Floating Window which can now be moved out of the main Layout Tab.

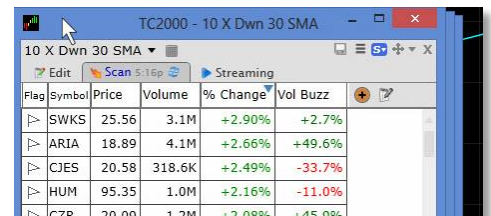


To drag onto your monitor separate from your main Layout Tab, click and drag the top blue frame of the Floating Window.

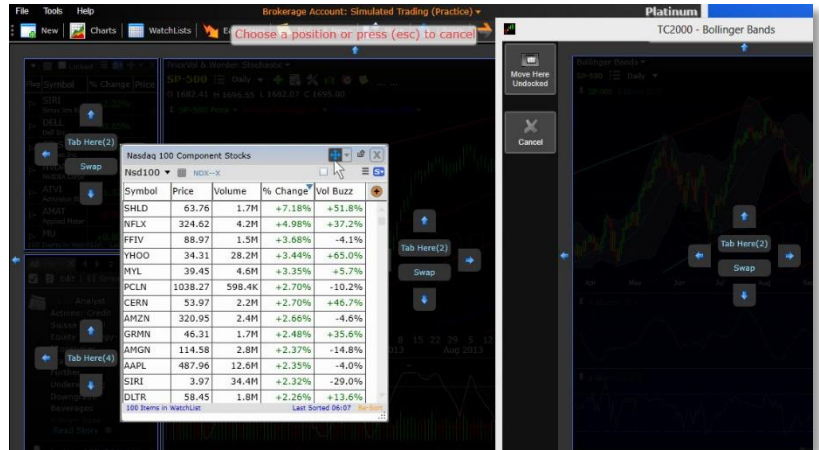
True Windows Functionality

With TC2000 you now have true windows functionality. You can open two or more layouts, drag them to another monitor, minimize in your task bar or hide the window behind another.

Once you have clicked on the Float Window button (described above) simply click on the floated windows blue frame and drag or minimize to the desired location, including any secondary monitor.



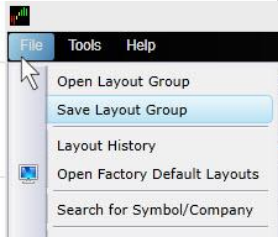
You can Tab or Dock multiple tools in any of your floating windows. Click the move button and then use target mode to select the Window into which you want to dock/tab your new tool window.



If you have multiple Tool Windows tabbed or docked in a Floating Window, when you click on the X to delete it, you are prompted to either Discard (delete) the window or make it a tab in the main Layout Group window.

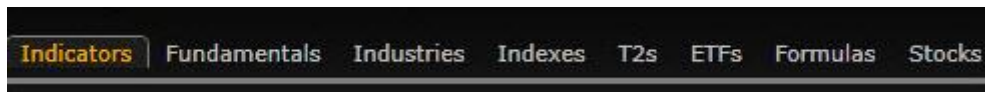


To save the entire multi-window (or multi-monitor) layout group by click File, Save Layout Group.



CHARTS

TC2000 now gives you multiple Plot types that can be added to any chart.



Indicators

There are nearly 80 technical indicators you can add to your charts. New to version 12.4 is the ability to Change Data Source--what an indicator is based on. This allows you to make an indicator of an indicator.

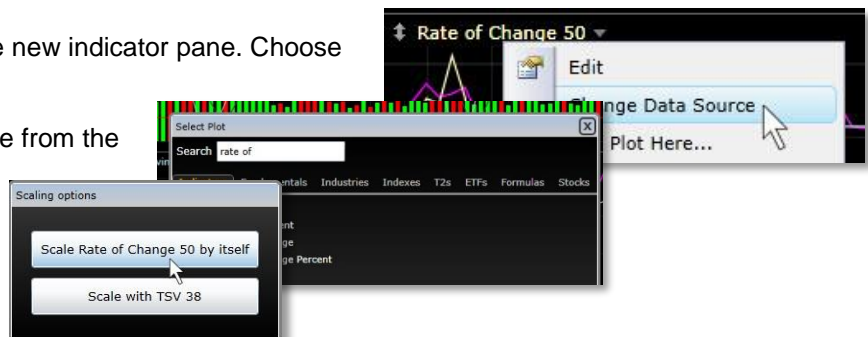
Example:

Press the / key on your keyboard and type TSV® to add the Time Segmented Volume® indicator to your chart.

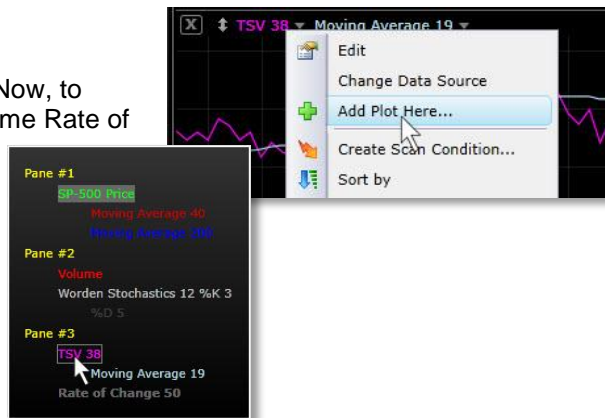


Click on the TSV® label in the top legend of the new indicator pane. Choose Add Plot Here.

Type Rate of Change and select Rate of change from the list. Choose Scale Rate of Change 50 by itself.



This overlays the Price Rate of Change over the TSV® indicator. Now, to make this indicator a Rate of Change of the TSV®, click on the name Rate of Change 50 in the top legend of the pane. Choose Change Data Source.



Select TSV® from the list. Your new indicator is now a Rate of Change of the TSV® indicator.

Multiple Price Histories

You can also now plot multiple price histories in the same Chart Tool Window.

Press the / key on your keyboard, click the Stocks tab and enter the desired symbol in the Select Symbol to Plot field.



You will now see two price charts displayed with the same time frame and time span.

The secondary chart history will not change even as you space bar through a WatchList changing your primary symbol.



DATA

Sector and Industry data from Morningstar®

New to TC2000 12.4 are more accurate to the current market and give a broader synopsis of where each stock lays in the broad market scheme. The new breakdown is as follows:

Super Sector & Sector List (with symbols)

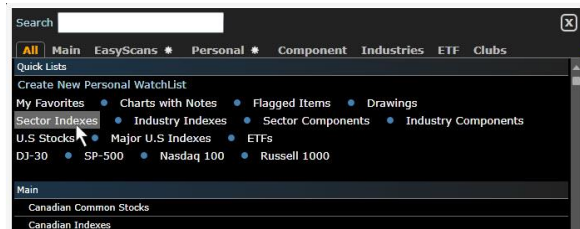
- Cyclical (SSX10)
 - Basic Materials (SX10)
 - Consumer Cyclical (SX20)
 - Financial Services (SX30)
 - Real Estate (SX40)
- Defensive (SSX20)
 - Consumer Defensive (SX50)
 - Healthcare (SX60)
 - Utilities (SX70)
- Sensitive (SSX30)
 - Communication Services (SX80)
 - Energy (SX90)
 - Industrials (SX100)
 - Technology (SX110)

The 11 Sectors are further divided into 146 Industries.

To access these lists by symbol, simply type the desired symbol.

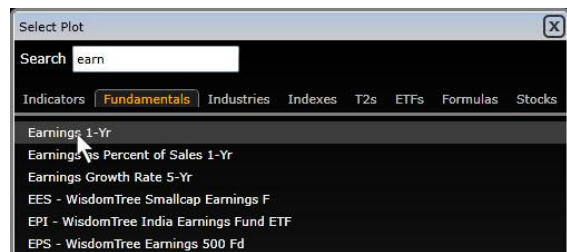


To access the WatchLists of Sector Indexes, Industry Indexes or Industry groups, click any WatchList drop down and look in the Quick Lists section of the WatchList window. (Alternatively, click the WatchList menu at the top of TC2000 to open any of these WatchLists as an undocked window.)



Historical Fundamentals

You can now plot Fundamental data historically for up to 30 years. To plot any Fundamental field on your chart, press the / key on your keyboard, click the Fundamentals tab and type the desired fundamental field in the search field. Click on the name from the list.

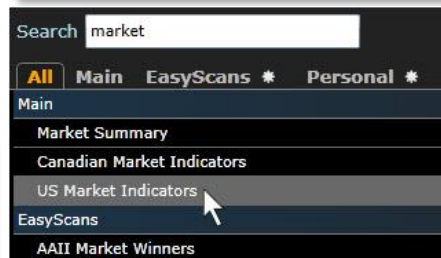


This will plot your fundamental(s) on your chart and show you the history of that criteria for that stock. Change your chart to longer time frames (e.g. weekly or monthly) to see more of the history for the price and fundamental(s) plotted.

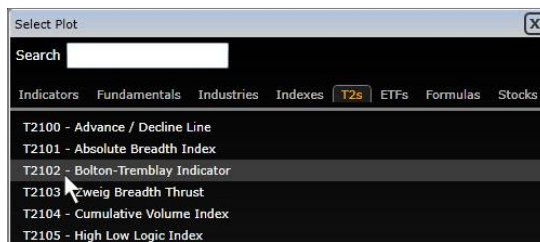


Streaming Real-Time Market Indicators

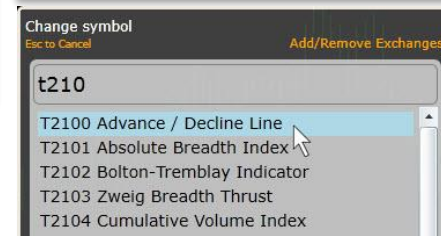
The Worden T2 Market indicators now stream in real-time. To access the WatchList of T2s click any WatchList drop down, type 'market' in the search field and choose US Market Indicators from the list. This will open a WatchList of the 28 broad market indicators.



To add a plot of any T2 on your chart, press the / key on your keyboard, click the Fundamentals tab and type the desired fundamental field in the search field. Click on the name from the list.



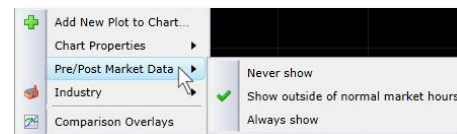
To change your current active symbol to one of the T2 indicators, simply type 'T210' and select the Market Indicator you want from the list.



Pre & Post Market Data (Platinum only)

Platinum TC2000 12.4 users can now see Pre- and Post-market data on any chart.

To access, right-click anywhere on the chart and choose Pre-Post Market data from the drop-down menu. Select which view of the data you want to be the default.



EasyScan: The Fastest Way to Find Stocks with TC2000

Using TC2000's unique ability to create indicator conditions from the chart, write them with formulas or draw them from a pre-built library, EasyScan allows you to instantly search the markets for stocks that look like you want them to right now. Whether you are looking for candle patterns, indicator set ups or sound fundamentals, EasyScan allows you to combine these behaviors and reduce large WatchLists to manageable size. Plus, with Continuous Scanning in TC2000 Platinum, you can have your results streaming in real-time.

You will learn how to:

- Create conditions that possess certain indicator behaviors right from the chart
- Combine conditions created in a variety of ways to screen for stocks that reflect your desired behavior
- Utilize multiple time-frames and indicators in a single scan
- Grab and employ simple Personal Criteria Formula for candlestick scanning
- Construct a library of purposeful EasyScans which can be instantly called up for any market conditions

TC2000 Features you will use: EasyScan; condition building from the chart; condition libraries; sorting; conditional alerts; time-frames; indicator editing; simple PCFs; column sets

Building Conditions

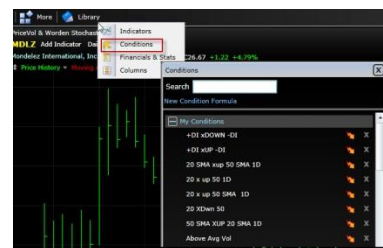
A condition used for sorting or scanning is a behavior or value based on indicators or formula (pre-built or user created). For example, price crossing a moving average is a "condition"--an interaction between two plots. Sorting has to do with taking a single condition and ranking a WatchList with it. Scanning allows you to combine multiple conditions, created in any fashion you choose, to find stocks that meet only those conditions as defined by you.

Creating and accessing such conditions can be done several ways in TC2000.

Pre-built libraries

Click the Library menu and choose Conditions. This library contains many pre-built conditions already loaded into your TC2000. Click the lightning bolt icon next to the condition name to run a scan with that single condition.

This library will also contain conditions you create and save from chart indicators or write with Personal Criteria Formula.

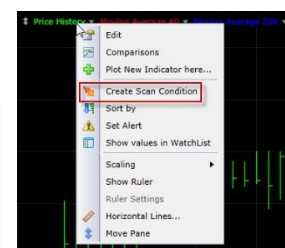
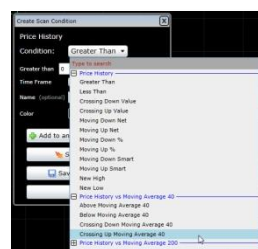


Chart

To create a condition for sorting or scanning from your chart indicators, click on the indicator name in the legend at the top of the pane. Choose Create Scan Condition.

From the drop down menu, choose the particular condition behavior desired.

Set the remaining parameters for your condition as well as save it to your condition library.

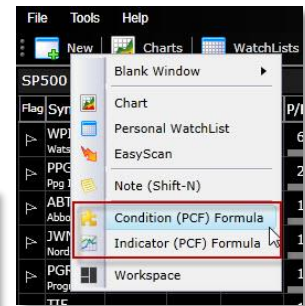


PCF

You can also create conditions or values using Personal Criteria Formula. Click the New button and choose either New Condition Formula or New Indicator Formula. (A condition formula is Boolean and returns True or False. An indicator formula returns a value and can be plotted as an indicator as well as used for sorting and scanning).

Enter the formula, choose the time frame to which you want the formula applied, name and save the formula. (Note: The test button allows you to test your syntax for validity against a symbol.)

For more on Personal Criteria Formula syntax and usage, click the Help File and search Personal Criteria Formula in the Index.



Sorting

Conditions built from the chart or used from the pre-built library can be applied as a sort in any WatchList.

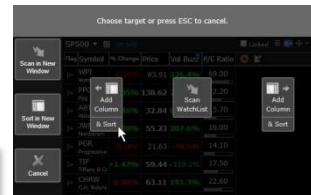
Sorting from Chart

Create the condition as directed above. Then choose *Add to Existing WatchList or Scan*.

This opens Target Mode in all WatchLists or Scans in your Layout. Click on *Add Column* and *Sort* in desired WatchList.

The WatchList is now sorted by your condition with check marks appearing for symbols in the WatchList that meet your condition.

Symbol	Price	% Change	Vol	Buzz	P/E Ratio
JWN	55.39	+3.28%	077.8%	16.00	
AN	39.91	+0.81%	+33.1%	16.50	
RL	154.56	+1.62%	+335.9%	20.70	
ROST	58.00	+6.54%	106.9%	16.10	
MDT	42.39	+1.22%	136.6%	13.10	
SPN	32.25	+0.53%	-18.3%	28.70	
WPI	83.95	-0.30%	799.6%	69.00	
PPG	138.30	-0.18%	267.0%	22.20	
ABT	32.82	+2.40%	795.9%	15.70	
PCR	21.70	-0.05%	-4.4%	14.10	



Sorting from Library

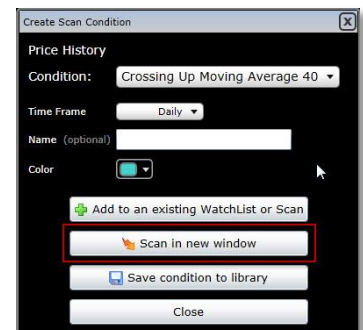
Open the Conditions library (see above). Click on the desired condition. This opens target mode...proceed as described previously.

EasyScan

Conditions built from the chart or used from the pre-built library can be combined and applied as an EasyScan in a new or existing WatchList.

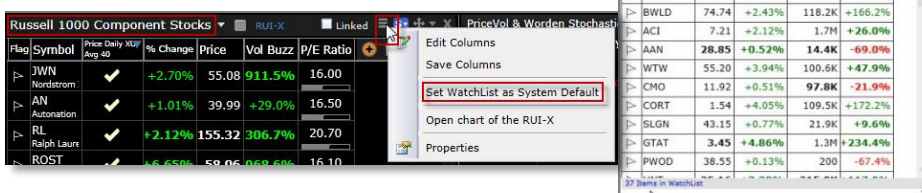
Create New Scan

Create the condition as directed above. Choose *Scan in New Window*. Your EasyScan will run on your default WatchList and bring you the results in a new window.



To Edit or Add scan conditions, click the *Edit Tab*. Click the refresh button on the *Scan tab* to run the scan against newer data. Platinum users click the *Continuous Scan tab* for streaming results.

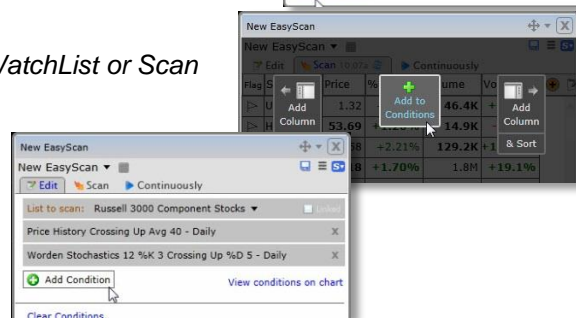
To set your default WatchList for new scans/sorts, choose the desired default WatchList from any WatchList Picker. Click the *Properties icon* and choose *Set as Default WatchList*.



Layering conditions on the fly

Create any condition as described above. Click the *Add to Existing WatchList or Scan* button. Click *Add to Conditions* in the desired EasyScan window.

Click the *Add condition button* in the Edit tab of your Scan results window to add conditions from your condition library.



Layouts: Create & Customize Your Own Trading Environment

The powerful Layout concepts in TC2000 allow you to create a personal work environment where you have all the tools you want at your fingertips for your stock research. A Layout Tab integrates windows that are arranged and interact for very specific reasons. Each Layout Tab can be set up to efficiently simplify your research and analysis—whether you're trading stocks, ETFs, mutual funds or Forex. Creating and customizing your Layout Tabs and Groups will make TC2000 uniquely yours and not simply a one-size-fits-all platform.

You will learn how to:

- Use starter templates to create Layouts for a variety of purposes
- Customize the properties of charts, WatchLists and tool windows to build visually pleasing set-ups
- Organize, move, rearrange and save Layouts to get designs that make your research fun and easy
- Build an effective library of customized Layouts that fit your trading personality and priorities
- The simple ways you can organize your Layouts with docking, tabbing and moving options
- Personalize your news and notes feed to whatever information you want streaming in
- Create, customize and use column sets for quick WatchList ranking
- Add/edit indicators to your charts

TC2000 Features you will use: Starter templates; move buttons; target mode; chart and WatchList customizations; custom system settings; docking/tabbing options; major menus; indicators

Customizing Layouts You Use

Remember that Layout Tabs are collections of windows that can be arranged any way you want as well as the interaction those windows have with each other.

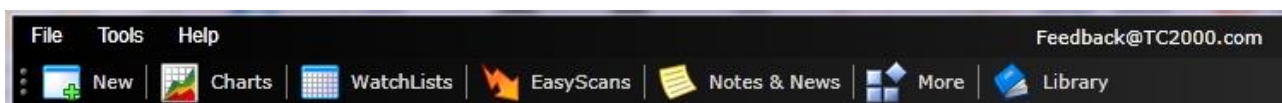
The TC2000 Default Layout Group includes two Layout Tabs: TC Classic and TC Classic+ (see section 1 of these notes). An easy way to customize your trading environment is to tweak these Layouts so they meet your needs in a more personalized way.

Here's how to modify and save Layout Tabs and Layout Groups. The Move button (and its accompanying drop down menu) at the top right of any window is key to quickly rearranging your Layout windows.

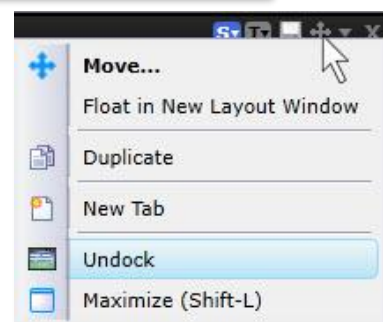


Add/Move/Tab Windows

When you want to add something to an existing Layout Tab, visit the Main Toolbar. You can generate Charts, WatchLists, Notes, Drawing Tools, etc. using corresponding buttons you'll find there. Charts, WatchLists, Notes, Drawing tools, etc. are contained within windows. Three things can happen to a window with regard to placement:

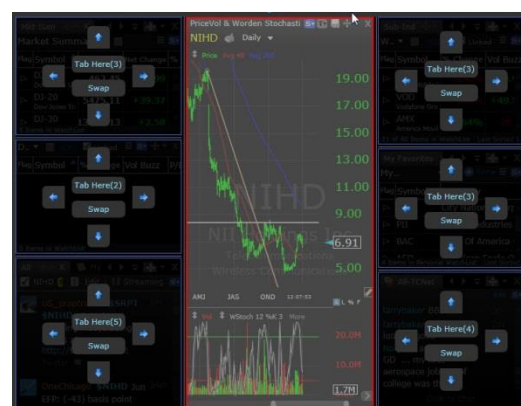


1. **UNDOCK:** Content generated from the Main Toolbar is often generated in an undocked window. Undocked windows can be resized and moved (while they remain floating within the layout). If a window is undocked and you want it to stay that way, do nothing. If a window is docked or tabbed and you want to undock it, choose **Move Button Drop-Down > Undock**

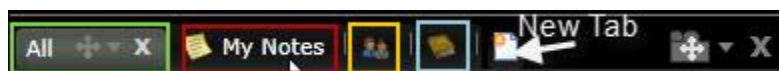


2. **DOCK:** When windows are docked, they are assigned a specific section of screen real estate within a Layout. Windows can be docked above, below, or beside another window or group of windows that are already docked. Windows can also be "swapped" so as to exchange positions in the Layout.

If a window is floating and you want to dock it, or is docked and you want to dock it in a new location, choose **Move Button > One of the Target Mode Arrows**



3. **TAB:** Multiple windows can be tabbed so that they share the same section of screen real estate. When windows are tabbed, you'll see a row of tabs across the top of the tabbed group. Click one of the tabs to see its content.



If a window is floating and you want to tab it with another window, or if a window is already docked/tabbed and you want to tab it with another window, choose **Move Button > Tab Here**

Note: Once windows are tabbed, individual tabs have Move Buttons and the tabbed group has a Move Button which allows you to move entire tab groups just as you would a single window.

Saving Layout Tabs/Layout Groups

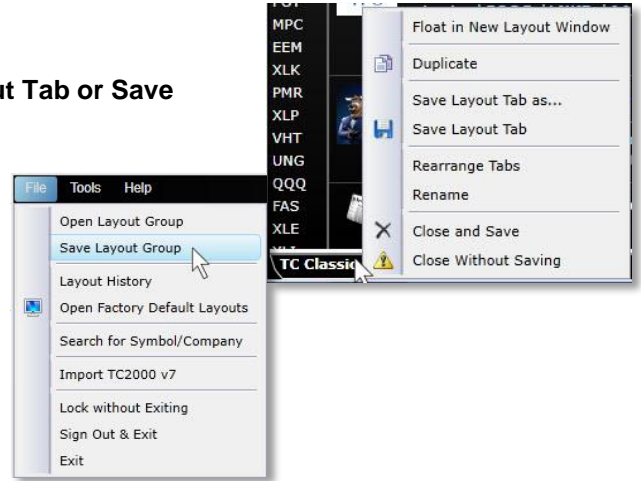
Remember that a Layout Tab is a collection of windows and their interactions. A Layout Group is a collection of Layout Tabs.

To save a Layout Tab, **Right-Click Layout Tab > Save Layout Tab or Save Layout Tab as...**

To save a Layout Group, select **File > Save Layout Group**

To open saved Layout Groups choose **File > Open Layout Group**, or use the **Add Layout Button** to open a saved Layout Tab

Remember that you can always re-open the Factory Default Layout Group (TC Classic and TC Classic+) via **File > Open Factory Default Layouts**.

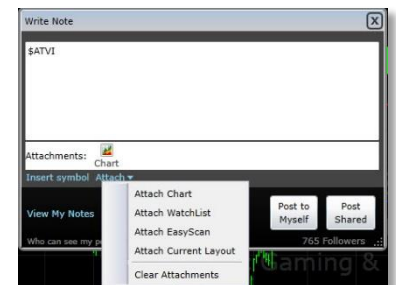


News & Notes

TC2000 Version 12.4 now contains a fully-integrated notes management system and provides consolidated, streaming, market-related news. There are several types of News and Notes windows; you can access any of them via the **Notes & News button** on the Main Toolbar.

Write a Note (Shift-N)

To create a Note, either choose this menu item or press **<Shift-N>** at any time. When writing a note, symbols written in this format: **\$SYM** create symbol links within your notes once posted, which can be clicked later to view the symbol's chart instantly. You can also attach Charts, WatchLists, EasyScans, or Layouts to notes via the **Attach drop-down** when writing a note. Attached items can be accessed when reviewing notes later. Choose to Post Myself for private notes or Post Shared to post notes to the TC2000 User community.



My Notes:

See notes that you wrote or posts that you copied to your Notes from another news or notes window. Notes written in previous versions of TC2000 are automatically archived in the My Notes window.

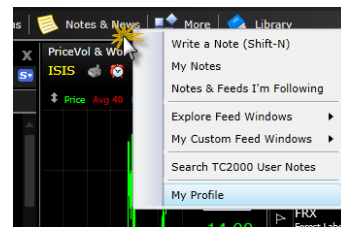


To copy a post from another news or notes window into your own My Notes window, find the post you'd like to copy, click the name of the poster, and select *Copy Post to My Notes*.

To comment on any post, click the **Add Comment button**. Hover your mouse over a post's time stamp for specific date and time information.

Notes & Feeds I'm Following:

See posts by everyone you're following in TC2000. Add or delete people to/from your *following* list via **Notes & News > My Profile > Following**



Explore Feed Windows

> **Expert Opinion Feed:** See posts published by professional third-parties.

> **All Notes, News & Twitter for Current Symbol:** See posts created by other TC2000 users, aggregated Internet news, related Twitter posts, Corporate Calendar events (Platinum only), and any notes you may have written about the symbol.

Use the **Edit button** to remove any of the types of content you wouldn't like to see displayed.

By default, you'll see a streaming list of symbols along the left of the window, which shows the most recently mentioned symbol at the top of the list. Select a symbol from the list to see related posts and stories. If you want to turn the list off, remove the check in the *By Symbol* box.

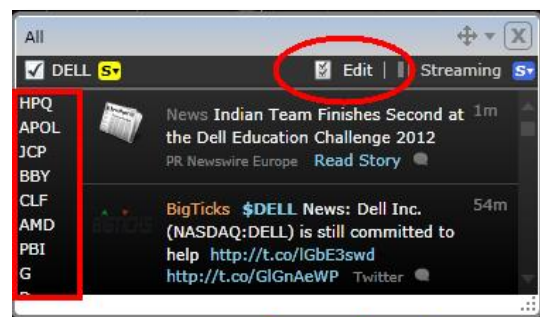
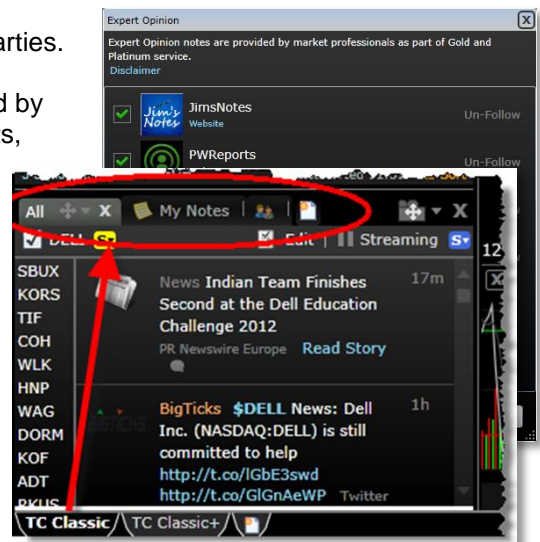
> **All TC2000 User Notes:** See notes that any other TC2000 user posted publically.

> **All News:** See only News stories.

> **All Twitter:** See only Twitter posts.

> **Full Stream of Notes, News & Twitter:** See posts created by other users, aggregated Internet news, related Twitter posts, Corporate Calendar events, and any notes you may have written. The items you see are not limited to a specific symbol. You will see posts for all symbols, system-wide.

> **Corporate Calendar of Upcoming Earnings & Events:** See announcements for upcoming corporate conference calls, Earnings announcements, etc.



You'll see some basic controls on many Notes & News windows. If you want the content of a window to be dictated by the current chart symbol, place a check mark in the **By Symbol** box. If you want to manage the types of content that are displayed within a window or would like to adjust font size, use the **Edit** button. For windows that have a **Streaming** button, click it to pause or restart content updating for the window.

The TC Classic and Classic+ Layout Tabs display three Notes & News windows by default. The three windows are tabbed in the bottom-left corner of the Layout Tabs and include News & Notes for Current Symbol, My Notes, and Following. Choose one of the tabs to see its contents.

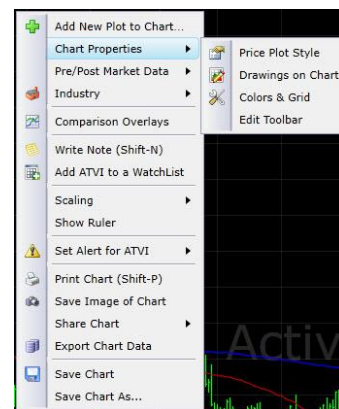
Window Properties

Charts

Chart properties control the way your charts look. They can be accessed and modified via **Right-Click Chart Background > Chart Properties**.

You may want to pay special attention to the **Colors and Grid** option. Many people want to see charts with a specific background color and either do or do not like grids on their charts. Use Colors and Grid settings to customize your charts. When finished, use the **Apply To button** to set new defaults.

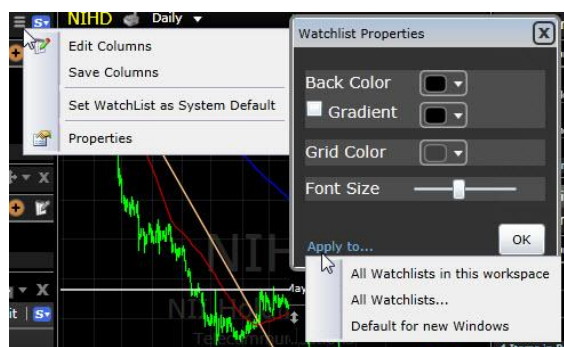
Also note the **Edit Toolbar** option. If there are certain things you like displayed at the top of your charts, Edit Toolbar allows you to make changes to the existing chart toolbar.



WatchLists

WatchList properties control the way WatchLists look. They can be accessed and modified via **Right-Click WatchList Background > Properties**.

Background color, grid settings, and font sizes can all be assigned. Use the **Apply To button** to set new defaults.



Maximize window

Sometimes it's nice to maximize a window so its content is the only thing you see on your screen. To maximize a window, use shortcut **<Shift-L>** or choose **Move Button Drop-Down > Maximize**.

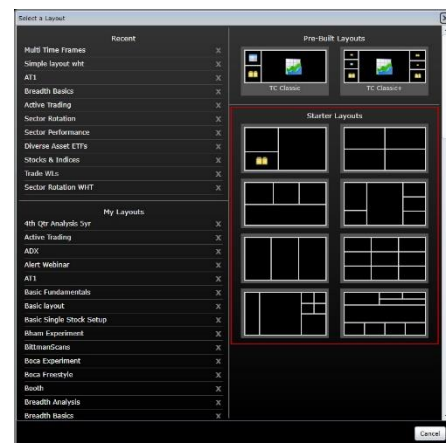
Once maximized, hit **<Shift-L>**, **<Esc>**, or the **Restore button** to return the window to its original position.

Creating Layouts from Starter Layouts

Starter Layouts

There's a New Layout Tab button to the right of the Layout Tabs that can be used to create a new Layout Tab or to open a recent or previously saved Layout Tab.

When creating a new Layout in TC2000 12.4, you can use what is called a *Starter Template* to make designing the Layout easy. Click the **New**

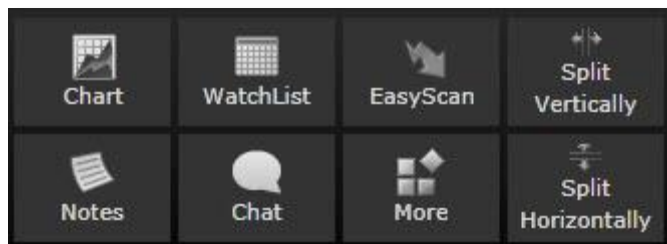


Layout Tab button to choose a Starter Layout. Choose the window design that's closest to what you want; then fill the template's windows with the types of content that suit your needs.

Starter Menu

You'll choose blank window content from this *Starter Menu*. Each button corresponds with a type of content you might like to see in a window.

Note the vertical and horizontal splitters. If/when you want to turn one window into two, use these splitters. The horizontal splitter turns one window into two windows sitting side-by-side. The vertical splitter turns one window into two windows, above and below one another.



Platinum Features

User Groups

TC2000 12.4 provides the ability to chat with other users - either individually through Private Messaging, or as a group through User Groups. (Platinum only)

All User Group options can be accessed via the **User Groups button** located in the upper-right corner of the application. There are two default User Groups you can join: **All-TCNet** and **Help Forum**. Both are included in tabbed windows within the TC Classic+ Layout by default.

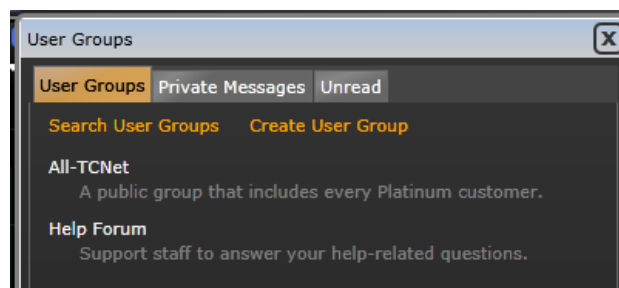
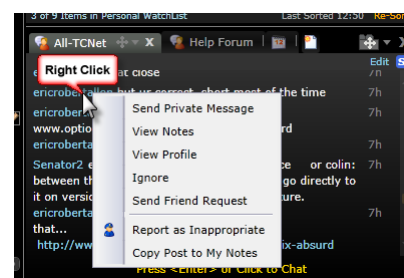
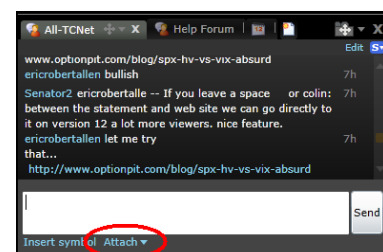
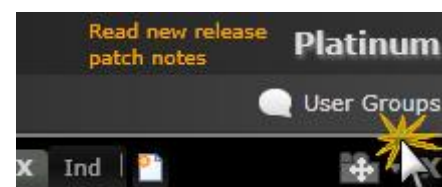
Click to type where prompted within a group. Charts, WatchLists, EasyScans, and Layouts can be attached for others to view via the **Attach button** within the User Group editor.

Within the User Groups tab of the User Groups dialog, you can search for the name of any of the groups you may have been a member of in a previous version of TC2000.

Within a User Group, click a poster's name to access a menu of options, including Send Private Message, View Notes, View Profile, Ignore, Send Friend Request, Report as Inappropriate, or Copy Post to My Notes. To manage your Ignored list, visit **Notes & News > My Profile > Ignored Users**.

You can also initiate your own group via the Create User Group button. Provide a name, and use the Edit button to add invite friends to join.

Use the Private Messages tab within the Chat dialog to send a one-on-one message to another user. People you're following are listed for easy access. Click a name to begin a private message. Click where prompted to type your message; Charts, WatchLists, EasyScans, and Layouts can be attached to private messages.



Corporate Calendar

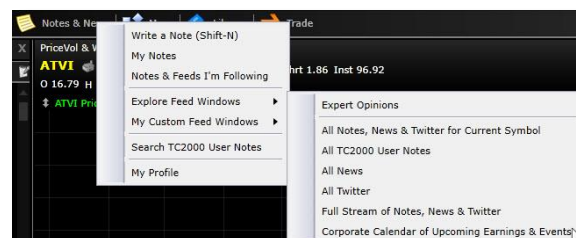
As a Platinum customer, you enjoy access to the Corporate Calendar feature of TC2000. The Corporate Calendar lists upcoming managerial and financial events for publicly traded companies, including:

- General Meetings
- Conference Calls
- Earnings Announcements

Corporate Calendar events are a part of the basic All Notes, News & Twitter windows that are a part of both the TC Classic and TC Classic+ Layouts by default.

To view the Corporate Calendar independently, choose **Main Toolbar > Notes & News > Explore Feed Windows > Corporate Calendar**

Within the Corporate Calendar, click the **Calendar button** to copy a post to your personal Notes. Click a **symbol** to view its chart.



Full Market Real-Time

As a Platinum customer, every action you perform in the software and every piece of information you study is "instant" as in "right now." Whether you are looking at a sort, chart, social feed, trading room or scan result - you should have confidence that it's happening at this precise moment - not a few hours ago, not even a few minutes ago. Your Real-Time market data covers Price and Volume for all stocks and ETFs listed on one of the three major American exchanges.

Any scanning or sorting performed using a Platinum TC2000 account returns results that are instant and up to date down to the tick.

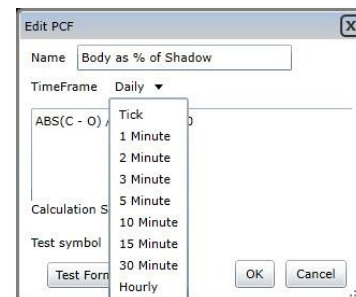
Real-Time Sorting/Scanning

Remember that when scanning as a Platinum user, you can use the **Streaming tab**, located within every EasyScan. When you choose the **Streaming tab**, displayed stocks/items that pass specified scan criteria are constantly updated. Items that pass the scan are instantly added to the results when they begin to pass scan conditions; they are instantly removed from the list when they no longer meet the requirements of the scan.

Flag	Symbol	Price	Volume	% Change	Vol Buzz
▶	OSIR	19.15	1.1M	+14.47%	+446.3%
▶	VVUS	10.08	3.2M	+7.46%	+97.9%
▶	THC	43.88	2.1M	+6.07%	+90.6%
▶	WNR	31.15	1.1M	+4.78%	+5.7%
▶	NHF	7.98	235.7K	+3.23%	+64.7%
▶	TEN	52.59	529.7K	+3.16%	+43.6%

6 Items in WatchList Last Sorted 01:52

You can also apply your Personal Criteria Formula (PCFs) to intraday time frames with TC2000 Platinum. Simply create your formula and in the Edit window choose the time frame upon which you want your condition or indicator PCF based.



Checking the Pulse of the Market

Broad Market Analysis – What is the Market Doing Now?

Understand Broad Market Conditions

First, check out what's going on with the Stock Market. Take a look at charts for the following symbols: SPX, DJ-30, COMPQX. These should give you a good feel for what the broad Market looks like on average. Take note of how current price levels look in relationship to any significant support and/or resistance in the area.



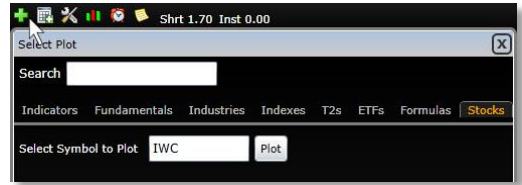
Next, take note of any significant price formations that are already in place or are in the process of development. Is the Market trending, transitioning, or ambiguous?

Examine Market Segments

Next, check out charts for Mid Cap (IWR), and Small Cap Indexes (IWC). Are large, mid, and small cap stocks moving in alignment with one another? Is one group notably out- or under-performing the others?



To add Price plots to the chart for each Index listed above, choose the 'Add Plot to Chart' button, select the 'Stocks' tab, then enter the symbol for the Index whose Price plot you would like to see on the chart.



Feel free to leave Price plots separate, or place them within the same pane for direct comparison. If needed, use the Move button for any of the Price plots to relocate the original indicator pane or to overlay within another Price pane.

Remember that if you want to see the list of stocks that make up any of the Indexes, select the 'Components' WatchList from the 'WatchList' button on the Main Toolbar.



Look for Market Turning Points

Be on the lookout for significant turning points for the Market – meaning markers or indicators consistent with direction change. Common markers for intra-trend bounces and pullbacks are the four core Bullish Japanese Candlestick Patterns and their Bearish counterparts:

- | | |
|-------------------------|-----------------------------|
| 1. Bullish Engulfing | 1. Bearish Engulfing |
| 2. Bullish Piercing | 2. Bearish Dark Cloud Cover |
| 3. Bullish Morning Star | 3. Bearish Evening Star |
| 4. Bullish Hammer | 4. Bearish Shooting Star |

Common markers for longer-term directional changes are Western Pattern topping and bottoming formations like the Head and Shoulders, Reverse Head and Shoulders, Double Top, Double Bottom, etc.

Check Out the Breadth of Trend Participation

To get a feel for the health of a current trend, checking some Breadth Indicators might be useful. Breadth indicators take a plot value or behavior and describe how an entire basket of stocks is behaving with regard to that value or behavior.

One Breadth indicator you might check is called 'The Percentage of Stocks Above the 200 Period Moving Average.' This indicator is labeled with the symbol T2107 in TC2000. Use the 'Add Plot to Chart' button, and select the 'Stocks' tab. Enter symbol T2107, and choose 'Plot'.

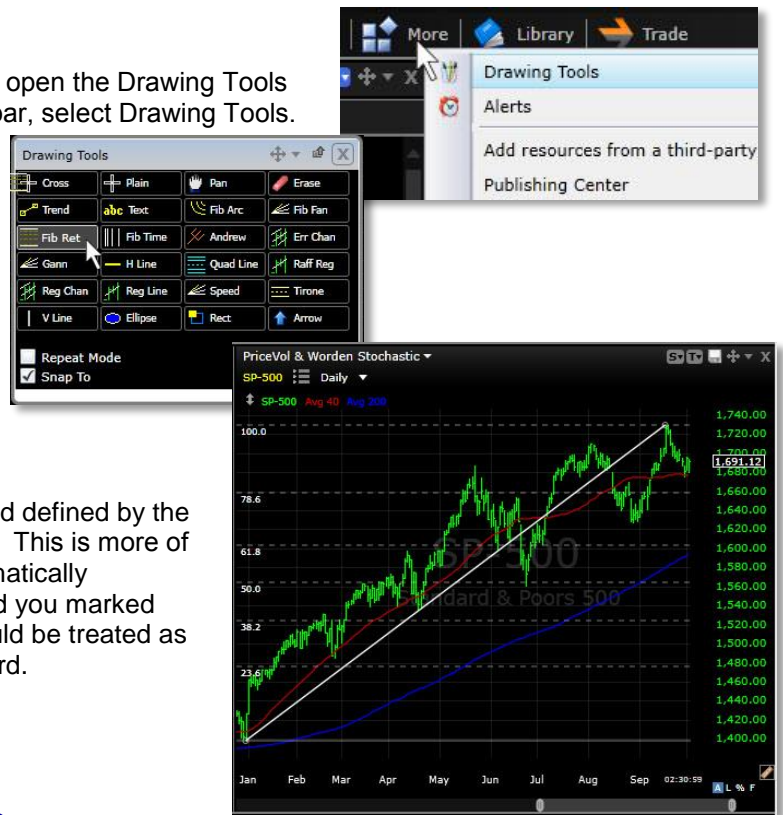
Now change the symbol of a separate Price plot to SPX, and compare the movement of the SPX to that of the T2107. You'll note that T2107 does a great job of exhibiting leading negative divergences when the Stock Market is getting 'toppy'.



If the Market is in a pullback phase, you might try applying a Fibonacci Retracement to see if any of the support and resistance level created by the Retracement are close to the current Price action.

To draw a Fibonacci Retracement, you'll need to open the Drawing Tools panel. From the 'More' button on the Main Toolbar, select Drawing Tools.

Within the panel, select 'Fib Ret' then click and drag across an appropriate period on a chart of SPX.



Always draw a Fib Retracement across the period defined by the 'last, most obvious, complete trend' on the chart. This is more of an art than a science, but the result will be automatically generated horizontal lines that break up the trend you marked into Fibonacci percentages – each of which should be treated as a possible support / resistance zone going forward.

Standout Sectors. Standout Stocks.

What about Sector performance?

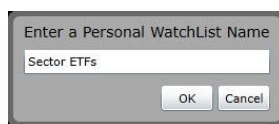
How are the major Market categories performing relative to one another? There are a couple of different ways you could approach this question.

1. You might take a look at the SPDR Select Sector Exchange Traded Funds, which are designed to track ten major Market segments.
2. You could look through the Morningstar® Sector and Industry Indexes. Both of these approaches will give you an idea of how the Sectors are performing relative to one another.

Since the first method is based on a list of ETFs, the charts you study will be of tradable assets. The second method provides average Price behavior for the group of stocks that compose each of the Sectors or Industries studied.

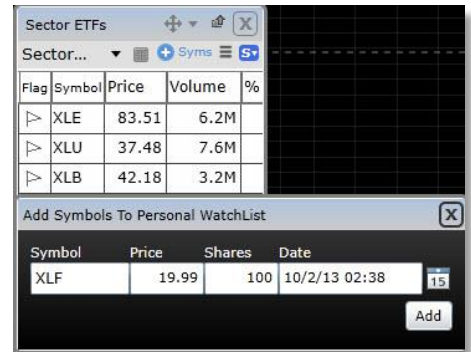
Should you choose the ETF comparison method, first make a WatchList of the SPDR Select Sector ETFs. To do so, click the 'WatchList' button on the Main Toolbar, and select 'Create New Personal WatchList'.

Name the WatchList.



Within the 'Symbol' field for the new WatchList, enter the following tickers: XLU, XLB, XLP, XLV, XLY, XLE, XLF, XLI, XLK. These symbols represent Utilities, Materials, Consumer Staples, Health Care, Discretionary, Energy, Financials, Industrials, and Technology, respectively.

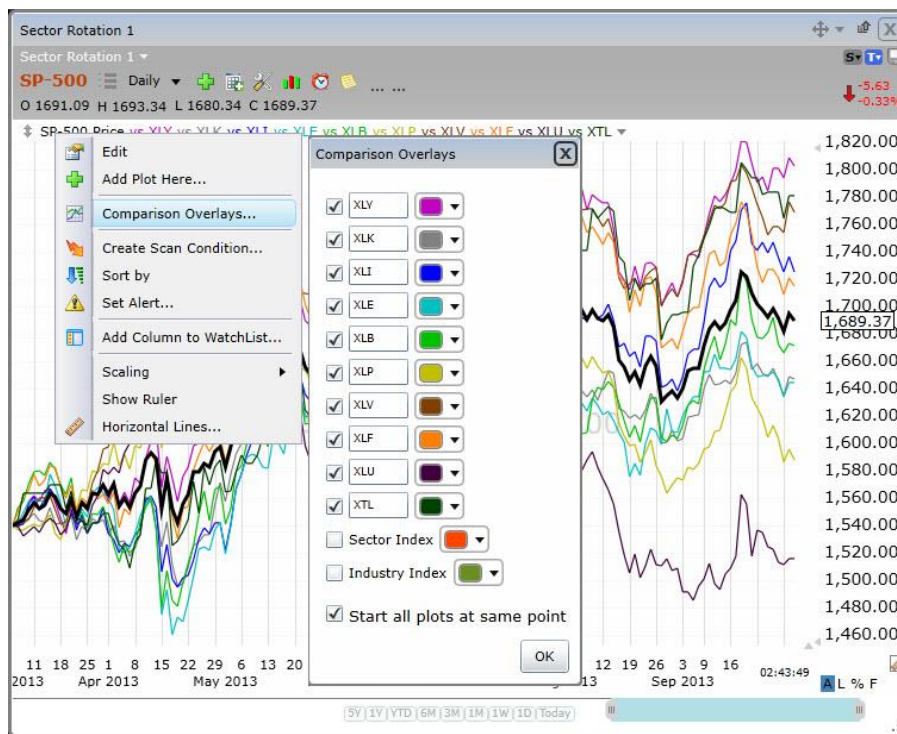
Once the list is created, Spacebar through the WatchList to view charts for each Sector ETF individually.



As an alternative, add separate Price plots for each ETF by selecting the 'Add Plot to Chart' button; then select the 'Stocks' tab and enter one of the ETF symbols. You'll need to repeat that process 9 times to add plots for each of the ETFs. Use this method if it's important to you that you be able to see a Price plot style other than 'Line' for the ETFs. If line graph comparisons are good enough, try the method described below.



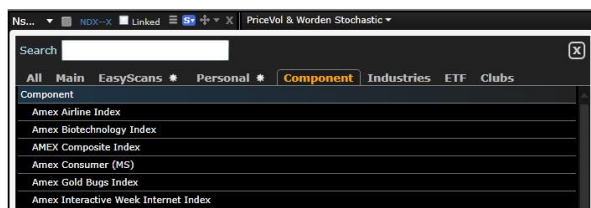
Start with a basic chart with one Price History plot on it. Assign the chart's symbol to SPX, which displays the S&P500 Index on the chart. Click the name of the Price symbol, and choose 'Comparison Overlays'. Within the blank 'Symbol' field, add each of the 9 Select Sectors. Choose colors for each plot.



If you want to view relative price performance over the period of history displayed on the chart, place a check mark in the box labeled 'Start all plots at same points', located near the bottom of the 'Comparison Overlays' dialog. In this mode, by changing the zoom level of your chart, you can immediately discern which of the ETFs (if any) outperformed or underperformed the others across the period displayed on the chart.

If you want to plot each of the ETF's Prices with independent scales, remove the check in the 'Start all plots at same points' box. In this mode, major behavioral characteristics of individual sector ETFs become apparent at inflection (turning) points for the Market.

Remember that for any of the ETFs, if you'd like to view a list of the stocks that are represented by the ETF, open a 'Components' WatchList via the 'WatchList' button on the Main Toolbar.



If you'd prefer to work with the Morningstar[®] Sector and Industry Indexes (described in the "What's New" section of this workbook), here are some ideas to try. Please note that the Morningstar[®] categorizations used now were recently adopted by TC2000 and are different than the old Industry classification scheme.

For complete information about the classification system:

<http://corporate.Morningstar.com/us/documents/methodologydocuments/methodologypapers/equityclassmethodology.pdf>

Resources for Further Study

CONTACT

We're here if you need us!

Please feel free to send comments to Feedback@TC2000.com. You can also email either of us: Julia.Ormond@Worden.com or Michael@Worden.com.

TUTORIAL VIDEOS

A library of "how-to" videos is available and constantly being updated. Click the **Help** menu in your TC2000, select Tutorial Videos and then click on desired tutorial link on the opened web page.

WEBINARS

Join our frequent Webinars to further your education on TC2000. Webinars are held many Tuesday evenings, 8 p.m. EST. You can learn about and register for the next webinar at the home page of Worden.com.

WEBSITES

Get more information about TC2000 as well as access to lots of training materials and program download links at www.Worden.com. (NOTE: sign into all websites with your Worden TC2000 sign-in credentials.)

FORUMS

To access the Discussion Forums, click on the Discussion tab at Worden.com if you have general questions about TC2000 going forward and need help setting something up.

-Search

To Search the Forums click on Search (top right of Forum page). Fill in each field. Be as specific as possible for narrower results. You can choose which Forum you wish to search from the drop-down menu. Results will be returned as a list of related discussion threads.

-Ask a Trainer

The Ask a Trainer forum (for TC2000) is available for you to ask any specific questions related to "how to" do anything in the software (e.g. How to write a specific PCF, build a scan, perform a sort, etc.). To ask a question, simply click on New Topic, enter your question and post. (You can choose to follow the discussion to receive an email when responses are posted.)

TECHNICAL SUPPORT

If you have any technical issues with TC2000, please contact Technical Support. Hours of operation:

Mon - Fri: 9:00 am - 9:00 pm ET

Sat: 9:00 am - 3:00 pm ET

Phone: 919-408-0542

Fax: 919-408-0545

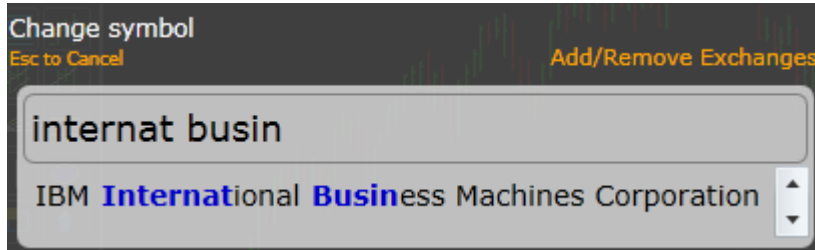
For email support: Support@Worden.com Platinum users have live Support Chat access as well.

The following are registered trademarks or trademarks of Worden Brothers, Inc.:

TC2000, TeleChart, TeleChart 2000, EasyScan, MoneyStream, Time Segmented Volume®, TSV, Balance of Power, BOP

TC2000 Hot Keys (Keyboard Shortcuts)

To pull up a particular stock, just start typing the symbol or the company name and the list will filter automatically.



To add an indicator or other plot to the chart, press / then start typing the name of the indicator or plot.

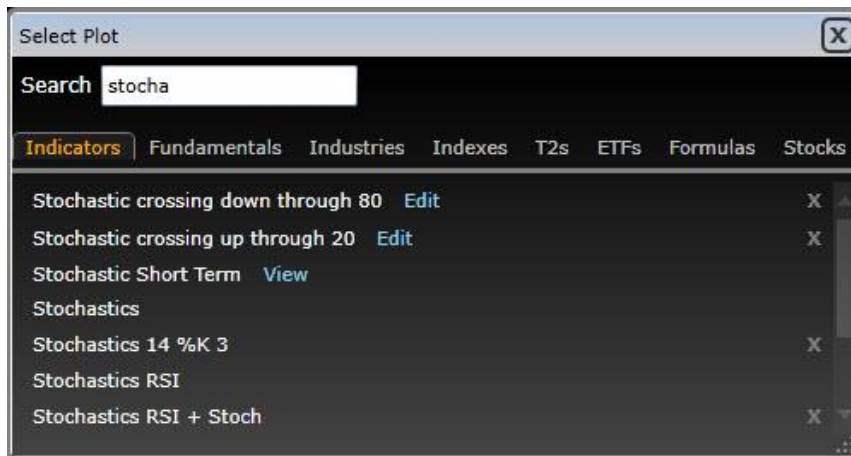


Chart time frame - you can scroll through time frame settings by holding down Ctrl and using the mouse scroll wheel. You can go directly to a time frame using the hot key list below.

<u>Time Frame</u>	<u>Key</u>		
Daily	1	Monthly	9 (toggle)
2 days per bar	2	Quarterly	9 (toggle)
3 days	3	Yearly	9 (toggle)
4 days	4	1-minute	Ctrl-1
Weekly	5	2-minute	Ctrl-2
6 days	6	5-minute	Ctrl-3
7 days	7	15-minute	Ctrl-4
8 days	8	30-minute	Ctrl-5
		Hourly	Ctrl-6

FUNCTION

HOT KEY(s)

Next symbol in list	Spacebar
Previous symbol in list	Ctrl-Spacebar
Backspace through history of viewed symbols	Backspace
Backspace through history of viewed symbols	Backspace
Go to top of watchlist	Home
Go to bottom of watchlist	End
Flag/Unflag selected symbol(s)	Shift-F
Toggle plot style	Ctrl-B (toggles between HLC Bar, OHLC Bar, Candlestick and Line plots)
Move chart backward/forward 1 bar	[and]
Move chart backward/forward 5 bars Shift	-[and Shift-]
Toggle date pointer Period	(.) key. Toggles between Off, on and on with data values box
Custom Date Sort	Shift-T
Write a Note	Shift-N
Draw Trendline	Shift-D
Zoom in/out on the chart	Mouse scroll wheel
Pan chart backward/forward	Shift + mouse scroll wheel
Scroll through time frames on the chart	Ctrl + mouse scroll wheel
Maximize window in layout (chart, watchlist, etc.)	Shift-L
Add selected symbol(s) to My Favorites	Shift-V
Copy selected symbol(s) to one of your personal watchlists	Ctrl-C

Load chart template

F1 - F9, F11 and F12 (F10 is reserved in Microsoft Silverlight and cannot be used). You can edit the templates that the F keys are assigned to by clicking the New Chart tab and setting the F keys on individual templates. (If you're on a Mac, you have to hold down the 'fn' key while press the F key.)

Notes:

The Control key on the Mac is reserved for operations in the Mac OS and is not available to Silverlight applications.

To use hot keys from TeleChart 2007, you need to have this option selected. Click on Tools, System Defaults and select the option to "Use TeleChart 2007 Hot Keys".

