

Worden Brothers, Inc.

TC2000

Training Class Notes

San Jose, CA

Julia Ormond, Instructor



2011

TC2000 Training Class Notes 2011

1. Introduction	2
2. Quick Tour	3
Online Access	3
Import TeleChart 2007 Settings	3
Global Settings	3
3. Chart Basics	4
Choose Time Frame	4
Add Indicator	4
Choose WatchList	5
News/Notes	5
Zoom & Pan	6
Drawing Tools	6
4. QuickSort	7
Daily Sorts	7
Intraday Sorts (Platinum)	9
Sort Menu	12
5. WatchList Columns	13
From Library	13
From Chart	15
6. EasyScan	17
My Universe	17
Fundamentals	18
7. Personal WatchList	18
Adding a Personal WatchList	18
Opening a secondary WatchList	18
Using the Industry Shortcuts	19
8. Alerts	19
Trendline Alerts	19
Price Alert	19
Condition Alert	19
Reminder Alert	19
Alert Manager	20
Delivery Settings	20
9. Resources	20

1. Introduction

WELCOME!

Thanks to all of you who attended class this past weekend in San Jose! It was awesome to see so many of you; we look forward to seeing more of you—either in another class or in our webinars!

These notes cover material from the morning Free Training Class. I hope they jog your memory and help you reproduce the things we did together Friday and Saturday. I have also included a few things I did not have time to cover in the class...hope you enjoy. (If you attended the Optional Hands-On Workshop in the afternoon, some additional notes will be included for you.)

NOTE: It is important for you to remember that we are presently in a **Beta** release of TC2000 so there will be lots of changes, additions and even a few bugs. Please feel free to provide your responses and suggestions to Feedback@TC2000.com.

Resource information can be found at the end of this document. Let us know if you need anything.

Until next time,
Julia Ormond

These are some helpful hints that will serve you well:

1. Your current TeleChart 2007 will continue to work indefinitely as a separate platform. There is no additional cost to use TC2000 with your present subscription. It is a free upgrade to your current TeleChart 2007.
2. There is a substantial new library of Indicators in TC2000. Click the Add Indicator button at the top of the chart to scroll through the list. If you see some with which you are not familiar, you can look in the Help file for a short description or find great information on the web at sites like Investopedia.com.
3. You can import your settings (PCF's, WatchLists, Chart Templates, etc.) from TeleChart 2007 either during the installation process of TC2000 or by clicking on the File menu and choosing the Import Settings from TeleChart 2007.
4. All future upgrades to TC2000 will automatically be present when you log in. New versions will be accompanied by a message asking if you would like to see the notes concerning what is new in the program. Click "Yes" to read the update notes.

2. Quick Tour

Online Access

TC2000.com is an online application, which you can access from any computer anywhere (including your personal settings, WatchLists, etc) .



Go to www.TC2000.com to download. To access the Beta, enter the password: fins1



Native Desktop Application

To install the desktop version, click on the Install TC2000 button.



Browser Access

You may also run a more limited version on line by clicking the Click Here link.



Import TeleChart 2007 Settings

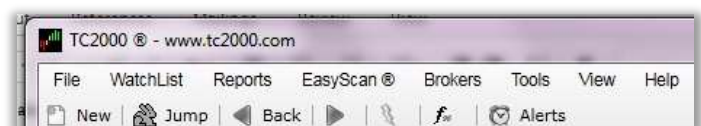
You can import your settings from TeleChart 2007 when prompted. (Note: this in no way affects your TeleChart 2007. It simply imports your settings into TC2000.com.) You will now have full access to TC2000.com and TeleChart 2007 at no additional cost.



Global Settings

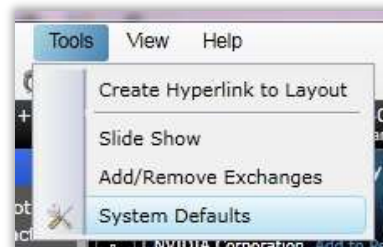
TC Menu

Classic EasyScan and PCF menus are at the top of the program.

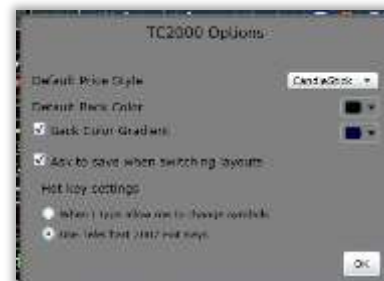


Settings

To utilize TC2000.com in “classic” TeleChart mode, click on Tools, Options, System Defaults.



Choose the “Use TeleChart 2007 Hot Keys” option to emulate the behavior of your TeleChart 2007.



3. Chart Basics

Choose Time Frame

Daily, Intraday and longer term charts are available by clicking the time frame drop down.

Gold

Streaming 15-Minute Delay. Your data at the Gold level is up to 15 minutes delayed, but is streaming so you can see intraday time frames.

Platinum

Streaming Real-Time. Your data at the Platinum level is full market streaming real-time so you can not only see intraday time frames, but sort and scan on those time frames as well.



Add Indicator

There is a huge library of indicators available by clicking the Add Indicator drop down. Simply type to shorten the list and click on the indicator you wish to add to your chart.

Add/Edit

To add an indicator, simply click on the name of the indicator in the Add Indicator drop down list or press the forward slash ("/") key, type the name of the desired indicator and click on it from that list.

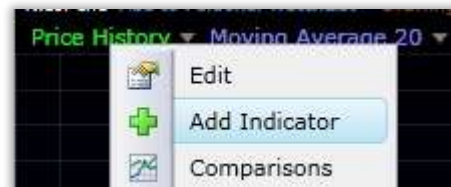


To Edit an indicator, click on the name of the indicator in the plot window and choose Edit.



Overlay

To add a child indicator or overlay an indicator in the same pane, click on the main plot in the pane and choose Add Indicator.



Choose WatchList

Use the WatchList picker to select a WatchList. The typing shortcut works in all drop down lists (e.g. Press the forward slash key ("/") and start typing "Standard" to find the S&P 500).



SpaceBar

Simply press the SpaceBar on your chart to walk through your WatchList of stocks. You can also simply click on a stock symbol in the WatchList to make it your active symbol.

News/Notes

You can access the latest news stories or your own personal notes in the window under your Personal WatchList window.



Display story

Click on the headline to read the entire story.

Personal Notes

To add a personal note to a symbol, click on the Note icon at the top of your chart menu and enter your text in the pop up window that appears. A copy of your chart as it is set up (including drawing tools) will be saved along with your text.



4. QuickSort

You can now sort (rank) any WatchList by any criteria on the fly. I started with the simple default layout of price (with moving average) and volume (with moving average).

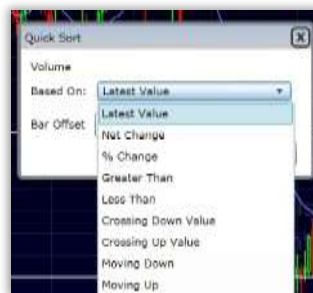
Daily Sorts

Select desired WatchList from the WatchList picker drop down (e.g. US Common Stocks; S&P 500; etc.)



Most Actives

Left click on the Volume plot and choose QuickSort. Select the desired criteria from the drop down menu (in this case, Latest Value).



Click Sort.

The WatchList is now Sorted by Volume in descending order (highest values at the top). These are the most active stocks in the market.

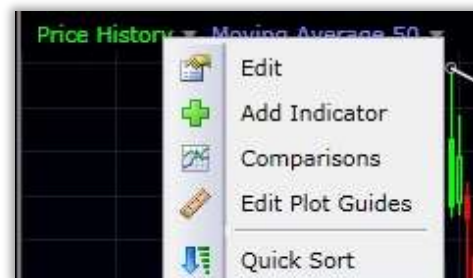
Symbol	Price	Volume	% Change	Volume Daily
C Citigroup	4.58	366.9M	-0.87%	368.0M
BAC Bank Of Ame	48.0M
IRE The Governm	31.3M
F Ford Motor C	23.5M

Indicator Sorts

You can create sort conditions directly from the chart on nearly every indicator in the library.

Price Crossing 50 SMA

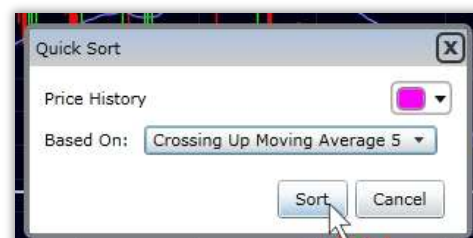
To find a price bar/candle crossing through its 50 bar Simple Moving Average, click on Price History at the top of the chart and choose QuickSort. (Be sure your moving average is set to 50 period).



Choose from the drop down "Crossing Up Moving Avg 50" from the drop down.



Click Sort.



The WatchList is now sorted by Price Crossing Up through the 50 bar moving average. At the top (with QuickSort lights) are the stocks from the WatchList exhibiting that behavior on the most recent bar.

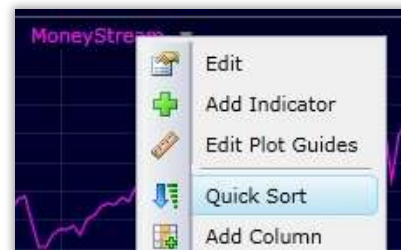


MoneyStream new High

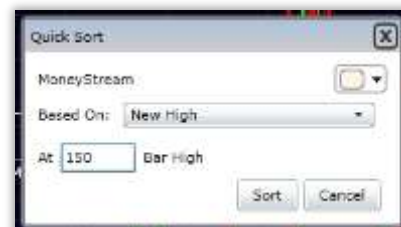
To find stocks reaching a new high in MoneyStream, add MoneyStream to your chart by pressing the forward slash key '/', typing "Money" and selecting MoneyStream from the drop down.



Click on the indicator name at the top of the chart and choose QuickSort.



Choose New High and set the period to 150 bars. Click Sort.



The WatchList is now sorted by MoneyStream hitting a new 150 bar high. At the top (with QuickSort lights) are the stocks from the WatchList exhibiting that behavior on the most recent bar.



Intraday Sorts (Platinum)

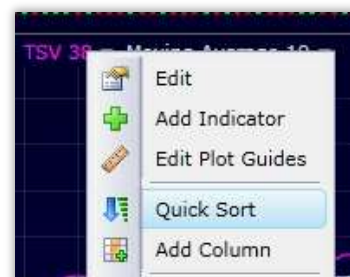
Change the time frame on your chart to 10 minutes by using the Bar Interval drop down.

TSV Crossing Zero Line

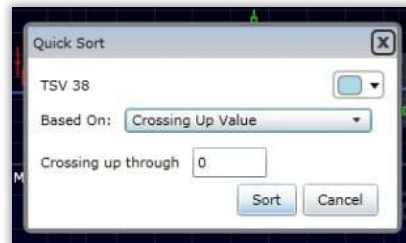
To find stocks where Time Segmented Volume is crossing up into bullish territory, add TSV to your chart by pressing the forward slash key '/', typing "TSV" and selecting Time Segmented Volume from the drop down.



Click on the indicator name at the top of the chart and choose QuickSort.



Choose Crossing UP Value and set the value to 0. Click Sort.



The WatchList is now sorted by TSV crossing up through its zero line. At the top (with QuickSort lights) are the stocks from the WatchList exhibiting that behavior on the most recent bar.

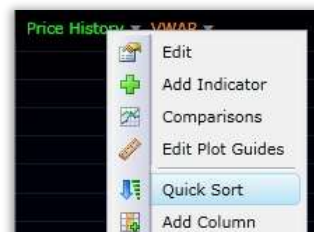


Price Crossing VWAP

To find stocks where Price is crossing up through the VWAP, add VWAP to your chart by pressing the forward slash key '/', typing "VWAP" and selecting Volume Weighted Average Price from the drop down.



Click on the indicator name at the top of the chart and choose QuickSort.



Choose Crossing UP through VWAP. Click Sort.



The WatchList is now sorted by Price crossing up through VWAP. At the top (with QuickSort lights) are the stocks from the WatchList exhibiting that behavior on the most recent bar.



Price Crossing Volatility Stop

To find stocks where Price is crossing up through the Volatility Stop, add Volatility Stop to your chart by pressing the forward slash key '/', typing "Volatility" and selecting Volatility Stop from the drop down.



Click on the indicator name at the top of the chart and choose QuickSort. Choose Crossing UP through Volatility Stop. Click Sort.



The WatchList is now sorted by Price crossing up through Volatility Stop. At the top (with QuickSort lights) are the stocks from the WatchList exhibiting that behavior on the most recent bar.

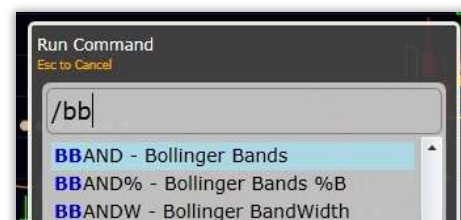


Price Crossing Bollinger Band

To find stocks where Price is crossing up through the bottom Bollinger Band, add Bollinger Bands to your price chart by pressing the forward slash key '/', typing "bb" and press enter.



Choose Price Chart to plot the Bands on Price.



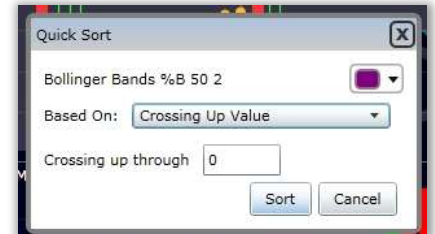
Also add Bollinger %B to your price chart by pressing the forward slash key '/', typing "Bollinger" and selecting Bollinger %B from the drop down.



Click on the Bollinger %B name at the top of the chart and choose QuickSort.



Choose Crossing UP Value and set the value to 0. Click Sort.



The WatchList is now sorted by Price crossing up through the bottom Bollinger Band. At the top (with QuickSort lights) are the stocks from the WatchList exhibiting that behavior on the most recent bar.



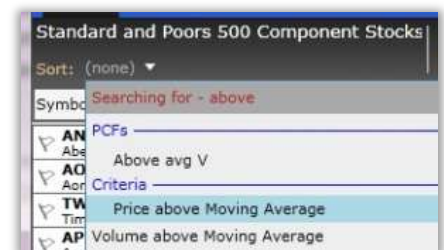
Sort Menu

You can also sort (rank) any WatchList by any criteria on the fly from the Library of preconfigured conditions.

Criteria Library

Price above 50 SMA

To find stocks with price above its 50 bar simple moving average, click on the Sort drop down (just above the WatchList) and start typing "Above". Select Price Above Moving Average from the list.



Set the parameters for the sort column in the Edit box.



The WatchList is now sorted by Price above the 50 SMA. At the top (with green column buttons) are the stocks from the WatchList exhibiting that behavior on the most recent bar.

Symbol	Abv 50 Avg	Price	Volume	% Chg
SYMC	Green	17.02	5.7M	+0.4
SVY	Green	29.31	2.2M	+0.4
TER	Green	13.90	4.7M	+3.3
SUN	Green	39.15	1.5M	-1.7
SWK	Green	63.50	1.2M	+0.5
SWN	Green	36.26	5.7M	-1.7
TIF	Green	62.77	855.4K	-0.5
C	Green	4.62	681.1M	0.0

PCF's

Range as % of Avg Range (PCF)

To find stocks which meet the conditions of one of your Personal Criteria Formulas, click on the Sort drop down (just above the WatchList) and start typing the name of the Formula (e.g. Range as % of Avg Range). Select the formula from the list.



The WatchList is now sorted by your PCF. At the top of the column are the stocks from the WatchList currently meeting that condition.

Symbol	Range as % of Avg Range	Price	Volume
MAS	305.57	13.18	9.1
LNC	285.37	27.26	8.9
HRB	265.92	12.75	11.3
MET	241.05	42.56	11.6
ALG	202.07	42.36	4.2
HCP	198.36	32.67	2.9
HCBK	195.88	12.32	4.1
CEPH	195.44	63.98	1.3

5. WatchList Columns

You can add sortable columns that stay in your WatchList (instead of being replaced each time like a QuickSort).

From Library

Your first option is to add a WatchList column from the list of conditions available in the Add Chart library.

Volume Buzz

To add a Volume Buzz column to your WatchList, click on Add Column. Type 'Buzz' and select Today's Volume Buzz from the list.



A column is now present that displays the current streaming values of Volume Buzz for each stock in the WatchList. To Sort by that column, simply left click on the column header (once for descending; twice for ascending).

Symbol	Price	Volume	% Change	Vol Buzz
C Citigroup	5.09	441.2M	+0.20%	+73.9%
BAC Bank of Am	14.89	101.9M	-0.67%	-4.6%
HU Micro Tech	9.70	52.7M	+5.85%	+201.7%
MRK Merck & Co	34.79	49.0M	-6.35%	+642.8%
F Ford Motor	13.89	63.2M	-0.90%	+62.3%
MSFT Microsoft Co	28.22	41.2M	-1.16%	+27.5%
INTC Intel Corp	21.25	52.3M	-0.23%	+85.3%
AA Alcoa Inc	15.79	52.9M	2.77%	1293.6%
NVDA NVidia Corp	23.83	46.5M	+1.20%	4387.3%
S Sprint Nextel	4.46	40.6M	-1.13%	+81.5%
PFE Pfizer Inc	15.56	50.1M	0.55%	...

MoneyStream Surge

To sort by 1 Week Volume Surge, click on Add Column. Type 'Surge' and select MoneyStream Surge 1-Wk from the list.



A column is now present that displays the values of the MoneyStream surge for the past week. To Sort by the column, simply left click on the column header (once for descending; twice for ascending).

Symbol	Price	Volume	% Change	MoneyStream Surge
C Citigroup	5.05	441.2M	0.00%	...
BAC Bank of Am	14.89	102.2M	-0.67%	2.24
HU Micro Tech	9.67	53.0M	+3.53%	39.40
MRK Merck & Co	34.76	49.0M	-6.43%	-81.15
F Ford Motor	13.87	63.3M	+0.86%	5.42
MSFT Microsoft Co	28.22	41.2M	-1.16%	1.15
INTC Intel Corp	21.24	52.3M	-0.28%	13.07
AA Alcoa Inc	15.77	53.3M	-3.07%	-14.53
NVDA NVidia Corp	23.51	46.2M	10.86%	52.46
S Sprint Nextel	4.47	40.7M	+0.91%	-7.00
PFE Pfizer Inc	15.21	50.2M	0.57%	28.58

Gappers

To sort by Gaps, click on Add Column. Type 'Gap' and select Gappers from the list.



A column is now present that displays the Gaps UP and DOWN. To Sort by the column, simply left click on the column header (once for descending; twice for ascending).

Symbol	Price	Volume	% Change	Gappers
PCAR Paccar Inc	56.40	1.6M	-1.70%	Gap Down
CB Chubb Corp	57.50	1.5M	-1.27%	Gap Down
HAS Hasbro Inc	44.53	1.4M	-3.33%	Gap Down
MRK Merck & Co	34.75	49.3M	-6.46%	Gap Down
FIS Fiserv Inc	29.88	1.4M	+1.55%	Gap Up
NYX Nyx Systems	32.69	2.4M	+1.45%	Gap Up
KLAC Kia Tencor	39.87	1.3M	+3.26%	Gap Up
HU Micro Tech	9.60	53.1M	+3.78%	Gap Up
JDSU JDS Uniphase	17.69	7.2M	+5.80%	Gap Up
DE Deere & Co	89.87	3.6M	+2.77%	Gap Up
MRO Marathon Oil	43.47	32.9M	+7.28%	Gap Up

From Chart

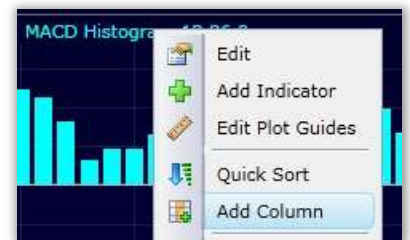
You can also add sortable columns that stay in your WatchList directly from your chart plots.

MACDh Crossing Zero Line

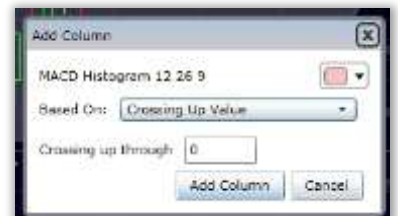
To add a sortable column to your WatchList based on MACD Histogram crossing up through its 0 line, add the indicator to your chart by pressing the forward slash key '/', typing "MACDh" and selecting MACD Histogram from the drop down.



Click on the indicator name at the top of the chart and choose WatchList Column.



Choose Crossing UP Value and set the value to 0. Click Add Column.



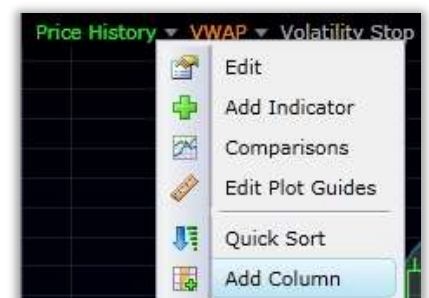
A column is now present that represents the sort value. To Sort by that column, simply left click on the column header (once for descending; twice for ascending). The WatchList is now sorted by MACD Histogram crossing up through the zero line. At the top (with QuickSort lights) are the stocks from the WatchList exhibiting that behavior on the most recent bar.



Price at 50 Bar High

To add a sortable column to your WatchList based on Price reaching a new 50 bar high, click on Price History at the top of the chart and choose WatchList Column.

Choose New High and set the value to 50. Click Add Column.



Two columns are now present that represents the sort values. To Sort by the new high column, simply left click on the column header (once for descending; twice for ascending). The WatchList is now sorted by Price at a new 50 bar high. At the top (with QuickSort lights) are the stocks from the WatchList exhibiting that behavior on the most recent bar. Any stock that meets the condition of both columns has lights in each column.

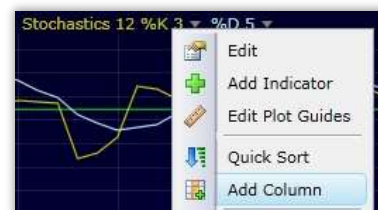
Symbol	Price	Volume	% Change
SLE Clare Lee Co	18.20	3.0M	+0.61%
XL XL Capital Lt	22.82	3.8M	+2.42%
LH Laboratory I	91.86	348.1K	+0.77%
FDX Fedex Corp	95.38	1.5M	+0.40%
CTAS Cintas Corp	28.49	165.6K	-0.07%
PH Parker Hann	88.67	0.9M	+0.01%
BK The Bank of	31.68	3.1M	+0.00%

Oversold Stochastics

To add a sortable column to your WatchList based on Stochastics less than 20, add the indicator to your chart by pressing the forward slash key '/', typing "Stoch" and selecting Stochastics from the drop down.



Click on the indicator name at the top of the pane and choose Add Column.



Choose Less than Value and set the value to 20. Click Add Column.



Three columns are now present that represents the sort values. To Sort by the Stochastics column, simply left click on the column header (once for descending; twice for ascending). The WatchList is now sorted by Stochastics less than 20. At the top (with QuickSort lights) are the stocks from the WatchList exhibiting that behavior on the most recent bar. Any stock that meets the condition of both columns has lights in each column.

Symbol	Price	Volume	% Change
SLE Clare Lee Co	18.20	3.0M	+11.88%
XL XL Capital Lt	22.82	3.8M	+2.42%
FDX Fedex Corp	95.38	1.5M	+0.40%
LH Laboratory I	91.86	348.9K	+0.77%
CTAS Cintas Corp	28.48	165.8K	-0.11%
PH Parker Hann	88.67	0.9M	0.05%
BHI Baker Hughes	58.76	2.0M	+0.00%
FLR Fluor Corp	70.20	2.0M	+0.40%

Mixing Time Frames

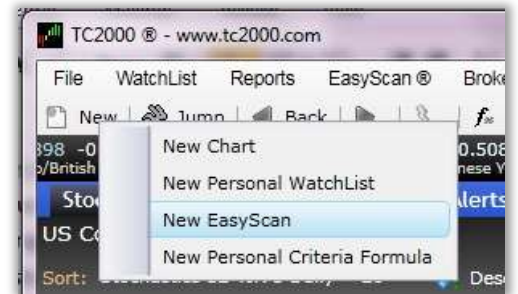
NOTE: you can mix and match time frames in these columns by simply setting up the column conditions from charts of different bar intervals (e.g. MACD Histogram cross on daily, Price at New 50 bar high on hourly and Stochastics oversold on 10 minute).

6. EasyScan

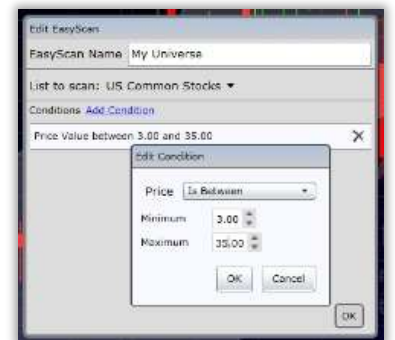
EasyScan allows you to combine multiple conditions and instantly search any WatchList for the stocks that currently meet those conditions. Here are a couple of scan examples.

My Universe

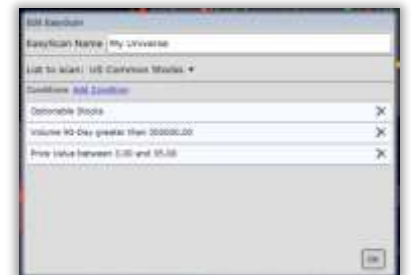
To create a new Easy Scan, click the New button at the top left of the chart and choose New Easy Scan.



Price between \$3/35. Name the Scan. Select the WatchList you want to scan from the dropdown. Then choose your first condition (e.g. Price between values of \$3 & \$35).



Volume 90 Day, 300,000 and up; Optionable. Add your other two conditions from the same drop down. Click OK.



The Scan is completed already. Only the stocks that meet these conditions are now in your WatchList.



To access your EasyScans, click the WatchList drop down and the EasyScan tab.



(**NOTE:** You can now Quicksort this scan—e.g. Volume above 50 SMA, daily; Price crossing up through VWAP now, 10 min)

Fundamentals

You can also combine multiple Fundamental conditions (or mix technical & fundamental conditions) and instantly search any WatchList for the stocks that currently meet those conditions.

- To create a new Easy Scan, click the New button at the top left of the chart and choose New Easy Scan.
- Name the scan, choose your WatchList to scan and then add the following conditions as directed above (using the range selector to choose the values).
 - Revenue last qtr (above 75)
 - Operating Cash Flow (above 75)
 - Capitalization (25-75)
 - P/E (less than 20)
 - Short Interest Ratio (below 75)

7. Personal WatchList

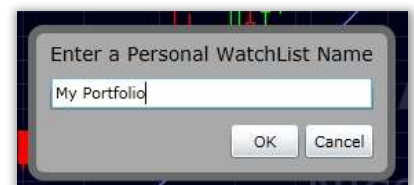
The window under your main WatchList is the personal WatchList window (these are WatchLists you create). It is also a window allowing you to open a second WatchList from the master WatchList menu.

Adding a Personal WatchList

To add a new personal WatchList, click on the New button at the top left of your screen and choose New Personal WatchList.

Naming WatchList

Name your new WatchList



Adding Symbols

Enter the symbols you want in your WatchList and the values for each of the Portfolio columns.



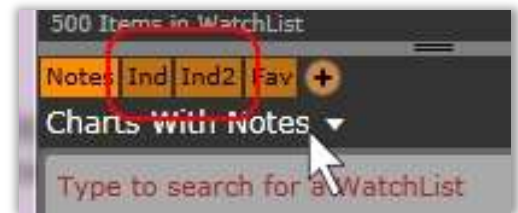
Opening a secondary WatchList

To open a second WatchList in the middle window, simply click on the WatchList picker in that window and select the desired WatchList from the list.



Using the Industry Shortcuts

Use the Ind and Ind2 hot keys to quickly add the Industry and Sub-Industry component lists for the active symbol displayed in your main WatchList.



8. Alerts

There are four kinds of alerts in TC2000.com.



Trendline Alerts

Simply draw a trendline (see Drawing Tools section), right click on the line, choose Set alert.

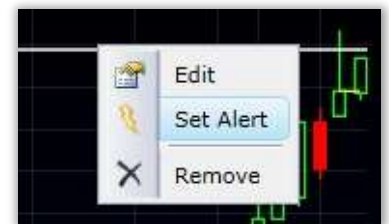


Set parameters and click OK.



Price Alert

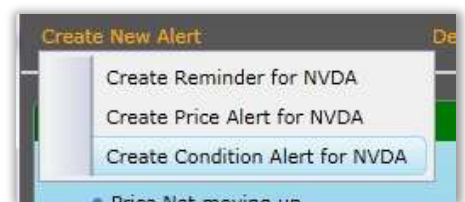
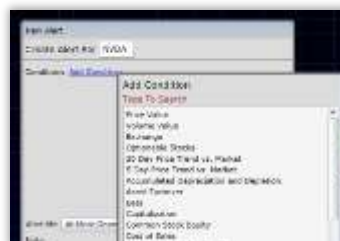
Use the horizontal line drawing tool and drag it to the price level desired. Right click on the line, choose Set alert. Set parameters and click OK.



Condition Alert

In the Alert Manager (see below) click on Create New Alert and choose Condition Alert.

Add the condition(s) desired and click OK.



Reminder Alert

In the Alert Manager (see below) click on Create New Alert and choose Reminder Alert.

Set parameters and click OK.



Alert Manager

Just above the WatchList drop down you'll see the Alert menu. Click to open the Alert Manager. You can choose which alerts to view and how to sort them there.



Delivery Settings

In the Alert Manager, click on Delivery Settings and enter your preferred email address and choose visual/audio alerts.



9. Resources

CONTACT

We're here if you need us!

To follow me on Twitter, open your existing (or create a new) Twitter account and in the search button put **@Mrktlady**. Click Follow to receive my frequent chart Tweets from FreeStockCharts.com.

You can email me at julia.ormond@worden.com.

WEBINARS

Join our periodic Webinars, which cover our products as well as bring you quality guests to help in your trading education. Webinars are held many Tuesday evenings, 8 p.m. EST. You can learn about and register for the next webinar at the home page of Worden.com.

WEBSITES

Get more information about TC2000 as well as access to lots of training materials and program download links at www.Worden.com. FYI: sign into all websites with your Worden (TeleChart or StockFinder) sign-in credentials. Keep an eye on Worden.com for instructional videos that will be posted there soon.

FORUMS

To access the Discussion Forums, click on the **Discussion** tab at Worden.com if you have general questions about TC2000 going forward and need help setting something up.

-Search

To Search the Forums, click on Search (top right of Forum page). Fill in each field. Be as specific as possible for narrower results. You can choose which Forum you wish to search from the drop-down menu. Results will be returned as a list of related discussion threads.

-Ask a Trainer

The Ask a Trainer forum (for TC2000) is available for you to ask any specific questions related to "how to" do anything in the software (e.g. How to write a specific pcf, build a scan, perform a sort, etc.). To ask a question, simply click on New Topic, enter your question and post. (You can choose to follow the discussion to receive an email when responses are posted.)

TECHNICAL SUPPORT

If you have any technical issues with TC2000, please contact Technical Support. Hours of operation:

Mon - Fri: 9:00 am - 9:00 pm ET

Sat: 9:00 am - 3:00 pm ET

Phone: 919-408-0542

Fax: 919-408-0545

For email support: Support@Worden.com

EXTERNAL RESOURCES

-Books

[Reading List Here:](#)

<http://www.mta.org/eweb/DynamicPage.aspx?webcode=cmt-recommended-reading>

Plus:

Stan Weinstein - Stan Weinstein's Secrets For Profiting in Bull and Bear Markets

Edwin Lefevre and Roger Lowenstein - Reminiscences of a Stock Operator

Michael Covel - The Complete Turtle Trader

William O'Neil - How to Make Money in Stocks

James Bitman - Options for the Stock Investor

-Websites

FreeStockCharts.com

FreeStockCharts.com/livewatch

Nasdaq Pre-Market Heatmap - http://screening.nasdaq.com/heatmaps/heatmap_pmi.asp

Financial Visualizations - <http://finviz.com/>